



European  
Road  
Safety  
Observatory

[www.erso.eu](http://www.erso.eu)



# Annual Statistical Report 2006

Based on data from CARE / EC

## SafetyNet

Building the European Road Safety Observatory

Workpackage 1 – Task 3

Deliverable No: D 1.9



Authors:

KfV	Austria
NTUA	Greece
SWOV	The Netherlands
TRL	United Kingdom

Workpackage Leader:

NTUA	Greece
------	--------

Task Leader:

KfV	Austria
-----	---------

Contract Number:

TREN-04-FP6TR-  
SI2.395465/506723

Project Number:

1.3.2

Acronym:

SAFETYNET

Version:

No3

Date of issue:

31/01/2007



## CONTENTS

<b>1</b>	<b>Introduction</b>	<b>2</b>
1.1	The CARE Database	2
1.2	Note to the Reader	3
<b>2</b>	<b>Overview – major issues</b>	<b>6</b>
2.1	EU-25 – Developments (includes databases other than CARE)	6
2.2	Interesting Details	7
<b>3</b>	<b>Time Series – last 10 years</b>	<b>10</b>
3.1	General time series	10
3.2	Time series related to mode of transport	14
3.3	Time series related to person age and gender	20
<b>4</b>	<b>Fatalities 2004</b>	<b>28</b>
4.1	People involved	28
4.1.1	Age and gender of persons	28
4.1.2	Age of persons by mode of transport	29
4.2	Modes of transport	32
4.2.1	Mode of transport by age of persons	32
4.2.2	Mode of transport by type of area	37
4.3	Accident characteristics	39
4.3.1	Various periods of time (month, day of week, hour of day)	39
4.3.2	Type of area/road	46
4.3.3	Type of junction	48
4.3.4	Weather conditions	50
<b>5</b>	<b>Fatal accidents 2004</b>	<b>51</b>
5.1	Various periods of time (month, day of week, hour of day)	51
5.2	Type of area / road	53
5.3	Type of junction	54
5.4	Weather conditions	55
<b>6</b>	<b>Glossary</b>	<b>56</b>
<b>7</b>	<b>List of tables and figures</b>	<b>62</b>

# 1 Introduction

## 1.1 The CARE Database

### Community database on Accidents on the Roads in Europe

Road traffic accidents in the Member States of the European Union annually claim about 43.000 lives and leave more than 1.8 million people injured, representing estimated costs of 160 billion euros. Since 1984, a large number of measures to reduce road accidents have been taken at a regional level. Along with these measures, the Council adopted a Decision on 30 November 1993 on the creation of a Community database on road accidents (93/704/EC)<sup>1</sup>, the CARE project.

It was commonly agreed that such a database at the Community level would make it possible to identify and quantify road safety problems, evaluate the efficiency of road safety measures, determine the relevance of Community actions and facilitate the exchange of experience in this field. After a pilot phase of about 3 years, the Council endorsed the "Report from the Commission on the progress with the project and its future prospects" (COM(97) 238 final).

CARE is a Community database on road accidents resulting in death or injury (no statistics on damage-only accidents are kept). The major difference between CARE and most other existing international databases is the high level of disaggregation, i.e. CARE is based on detailed data of individual accidents as collected by the Member States. This structure allows for maximum flexibility and potential with regard to analysing the information contained in the system and opens up a whole set of new possibilities in the field of accident analysis.

National data sets are integrated into the CARE database in their original national structure and definitions, with confidential data blanked out. However, transformation rules are implemented in the CARE database in order to increase data compatibility and thus enhance the functioning of the system.

The process of improving "homogenisation" of accident data within CARE is underway. In the meantime, the inherent incompatibility of national accident data remains a source of possible misinterpretation when performing comparative analyses at international level. Therefore, on-line access to the CARE database is currently restricted to expert users. The summary statistical tables and figures contained here provide an overview of road accident data from 1995 to 2004 (EU-15 without Germany). For some figures other sources than CARE have been used in order to give an overview of EU-25 road accident data.

<sup>1</sup> OJ No 329, 30.12.1993, p. 63.

## 1.2 Note to the Reader

This Annual Statistical Report provides the basic characteristics of road accidents in 14 member states of the European Union (the EU-15 excluding Germany) for the period 1995-2004, on the basis of data collected and processed in the CARE database, the Community Road Accident Database with disaggregate data (Council Decision EEC 93/704 final).

The period 1995-2004 has been used in order to maximize the sample of data. However, data for some countries and corresponding years were not yet available in the CARE database at the date of drafting this report.

The next table shows which data from the EU-25 are available in the CARE database (x) and used in this report .

x

Code	Country	1991-1994	1995	1996	1997	1998	1999	2000	2001	2002	2003	2004	2005
BE	Belgium	x	x	x	x	x	x	x	x	x	x	x	
CZ	Czech Republic												
DK	Denmark	x	x	x	x	x	x	x	x	x	x	x	x
DE	Germany												
EE	Estonia											x <sup>1</sup>	
EL	Greece	x	x	x	x	x	x	x	x	x	x	x	
ES	Spain	x	x	x	x	x	x	x	x	x	x	x	
FR	France	x	x	x	x	x	x	x	x	x	x	x	
IE	Ireland	x	x	x	x	x	x	x	x	x	x		
IT	Italy	x	x	x	x	x	x	x	x	x	x	x	
CY	Cyprus												
LV	Latvia												
LT	Lithuania												
LU	Luxembourg	x	x	x	x	x	x	x	x	x			
HU	Hungary												
MT	Malta												
NL	The Netherlands	x	x	x	x	x	x	x	x	x	x		
AT	Austria	x	x	x	x	x	x	x	x	x	x	x	x
PL	Poland												
PT	Portugal	x	x	x	x	x	x	x	x	x	x	x	
SI	Slovenia												
SK	Slovakia												
FI	Finland	x	x	x	x	x	x	x	x	x	x	x	
SW	Sweden	x	x	x	x	x	x	x	x	x	x	x	
UK	United Kingdom (GB+NI)	x	x	x	x	x	x	x	x	x	x	x	

<sup>1</sup>) Test data only

The reader should be aware of the following remarks concerning the contents of this Annual Statistical Report:

- It should be taken into account that analysis and comparisons of the numbers of accidents and injuries are not always possible, as different definitions exist in each EU Member State.
- Fatality data are compatible between countries and use common definitions as a result of the CAREPLUS 1 and CAREPLUS 2<sup>2</sup> project. Corrective factors have been applied to comply with the international definition of people killed within 30 days after an accident. ([http://ec.europa.eu/transport/roadsafety/road\\_safety\\_observatory/doc/care\\_glossary.pdf](http://ec.europa.eu/transport/roadsafety/road_safety_observatory/doc/care_glossary.pdf)).
- On fatal accidents data, no corrective factors have been applied to comply with the international definition of persons killed within 30 days.
- Minor differences in totals are due to rounding-off differences of data.
- "Unknown" values are not displayed in tables, but totals include the unknowns.
- The EU totals for all people killed are not necessarily the sum of each sub-division of these persons, given that there are no data available for all sub-divisions and all countries. Corresponding percentages refer to the available data.
- Partial or complete reproduction of these statistics is permitted if the source is mentioned and accompanied with the present remarks.

- The basic characteristics of fatal road accidents in the EU member states have been selected as those which might be useful for road accident analysis and where data are available for all or most of the EU countries (these are results of CAREPLUS project on making accident data comparable). More characteristics are available since the CAREPLUS 2 project. More precisely, the basic characteristics of fatal road accidents refer to:

**Person class** (driver, passenger, pedestrian)

**Person killed** (age groups and/or gender)

**Area type** (inside or outside urban area)

**Motorway** (yes or no)

**Junction type** (crossroad, level crossing, not at a junction, roundabout, T or Y junction)

**Weather conditions** (dry, fog or mist, rain, snow/sleet/hail, strong wind)

**Modes of transport – vehicle group** (agricultural tractor, bus or coach [>8 seats], car or taxi, heavy goods vehicles, lorry under 3,5 tons, pedal cycle, moped, motorcycle, other)

**Month** (January to December)

**Day of the week** (Monday to Sunday)

**Hour** (0-24)

- This report is amongst the first outcomes of the CARE database. The validation of the CARE system is not yet finished and minor amendments to the figures presented might be necessary. Comments can be addressed to [safetynet@lboro.ac.uk](mailto:safetynet@lboro.ac.uk).

<sup>2</sup> Cete-Sud Ouest (1997), A proposal for improving the comparability of road accidents within EU Member States using the CARE Database, CAREPLUS 1 Consortium, Bordeaux.

Cete-Sud Ouest (2000), A proposal for improving the comparability of road accidents within EU Member States using the CARE Database, CAREPLUS 2 Consortium, Bordeaux

## Disclaimer

The information in this document is provided as it is and no guarantee or warranty is given that the information is fit for any particular purpose. Therefore, the reader uses the information at their own risk and liability.

## For more information

Further statistical information about fatalities is available from the CARE database at the Directorate-General for Energy and Transport of the European Commission, 28 Rue de Mot, B-1040 Brussels (see [ec.europa.eu/transport/roadsafety/road\\_safety\\_observatory/care\\_reports\\_en.htm](http://ec.europa.eu/transport/roadsafety/road_safety_observatory/care_reports_en.htm)).

Traffic Safety Basic Fact Sheets available from the European Commission concern:

- Main Figures
- Children (Aged <16)
- Young People (Aged 16-24)
- The Elderly (Aged >64)
- Pedestrians
- Bicycles
- Motorcycle and Mopeds
- Car-Occupants
- Heavy Goods Vehicles & Buses
- Motorways
- Junctions

All these reports and more information about the integrated project "SafetyNet" which is co-financed by the European Commission, Directorate-General Energy and Transport are also available at the SafetyNet website: [www.erso.eu/](http://www.erso.eu/).

### Authors:

Stefan Hoeglinger, Andrea Angermann and Veronika Weiss	KfV, Austria
Niels Bos and Ellen Berends	SWOV, The Netherlands
George Yannis and Petros Evgenikos	NTUA, Greece
Jeremy Broughton, Brian Lawton and Louise Walter	TRL, United Kingdom

## 2 Overview – major issues

### 2.1 EU-25 – Developments (includes databases other than CARE)

Figure 1: Annual number of fatalities, injury accidents and injured people (EU-25), 1995-2004

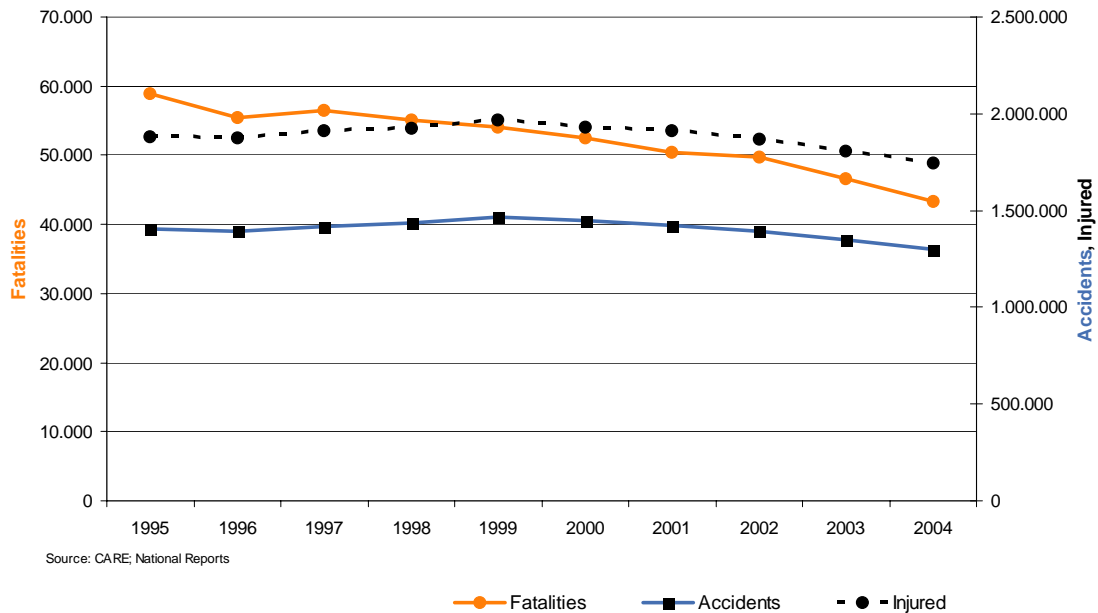
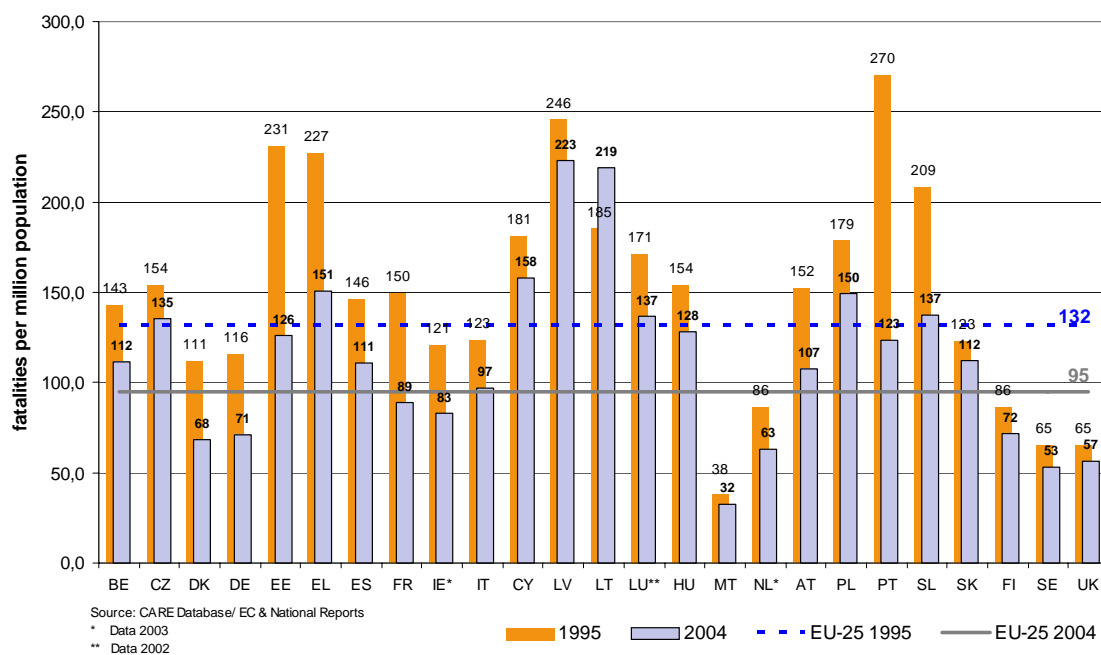


Figure 2: Fatalities per million inhabitants, 2004 compared to 1995 (EU-25)



## 2.2 Interesting Details

Figure 3: Share of fatalities by area type, 2004\*

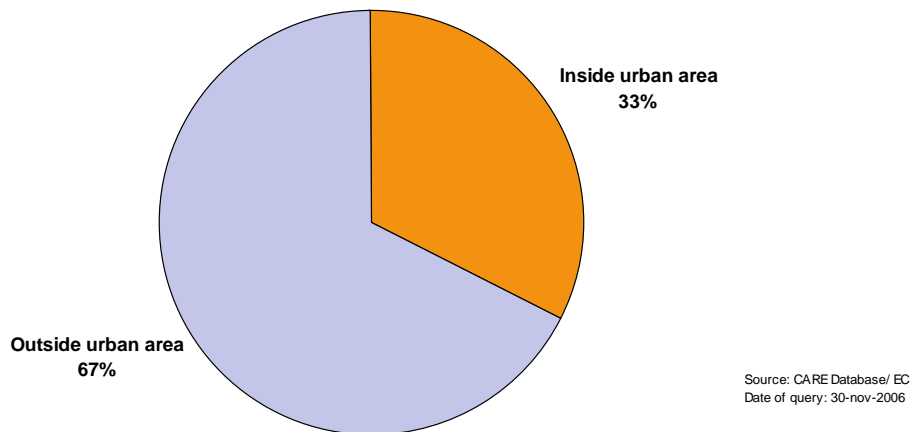
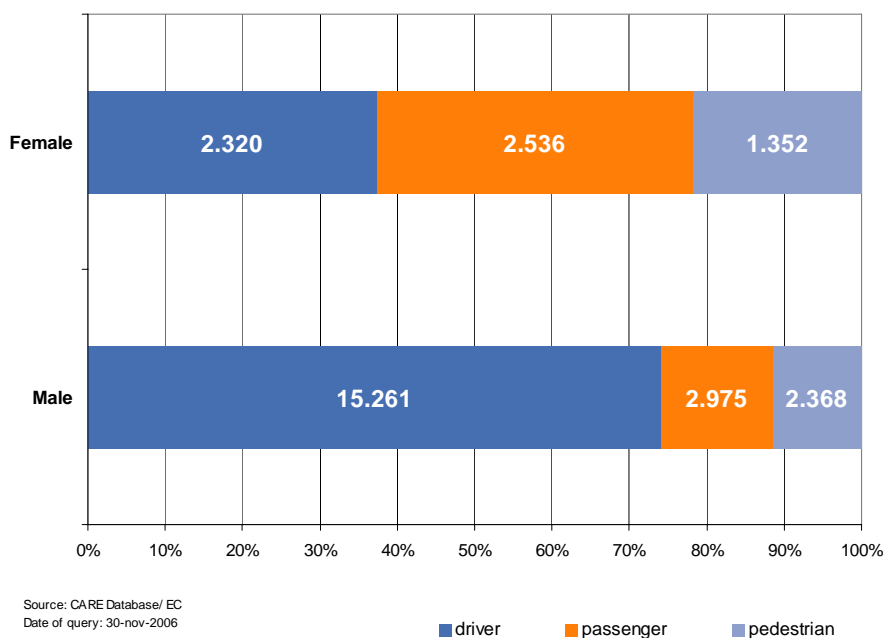


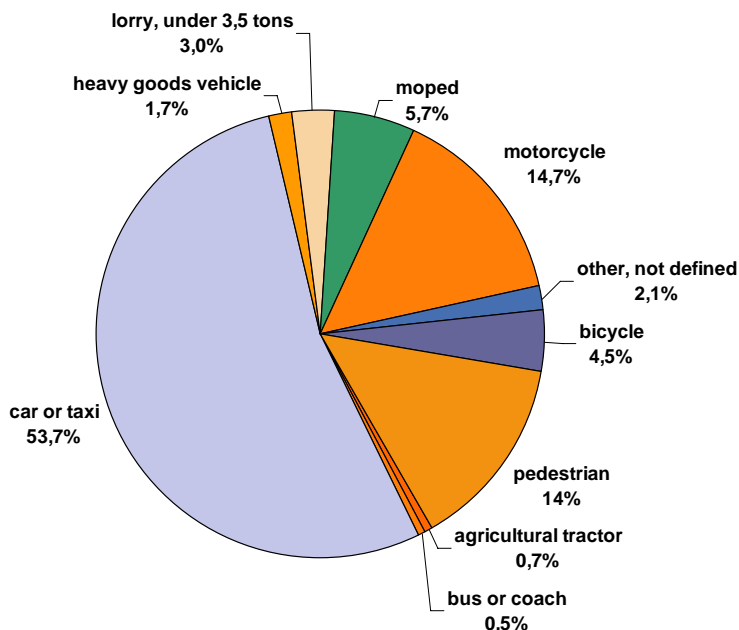
Figure 4: Distribution of male and female fatalities by person class, 2004\*



\* EU-15 without DE; IE & NL: 2003, LU: 2002

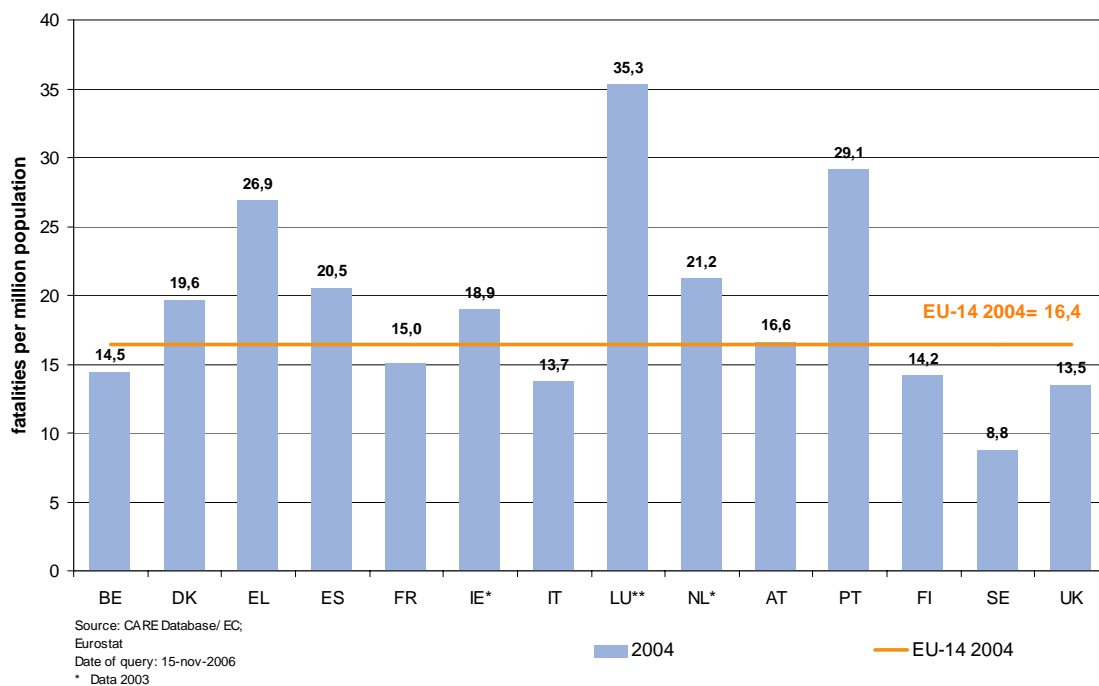


Figure 5: Distribution of fatalities by mode of transport, 2004\*



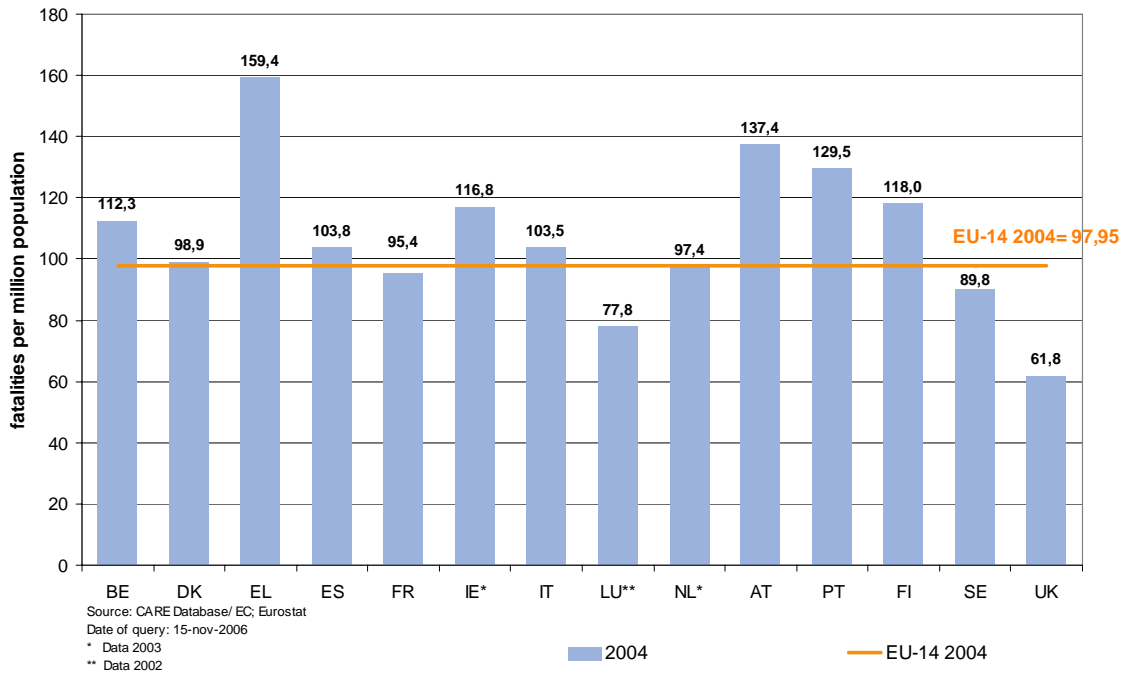
Source: CARE Database/ EC  
Date of query: 01-dec-2006

Figure 6: Fatalities of children per million inhabitants (aged 0-14 years), 2004



\* EU 15 without DE ; IE & NL: 2003, LU: 2002

Figure 7: Fatalities of seniors per million inhabitants (aged 65+), 2004



### 3 Time Series – last 10 years

#### 3.1 General time series

Figure 8: Percentage change in number of fatalities and injury accidents by country (2004 compared to 1995)

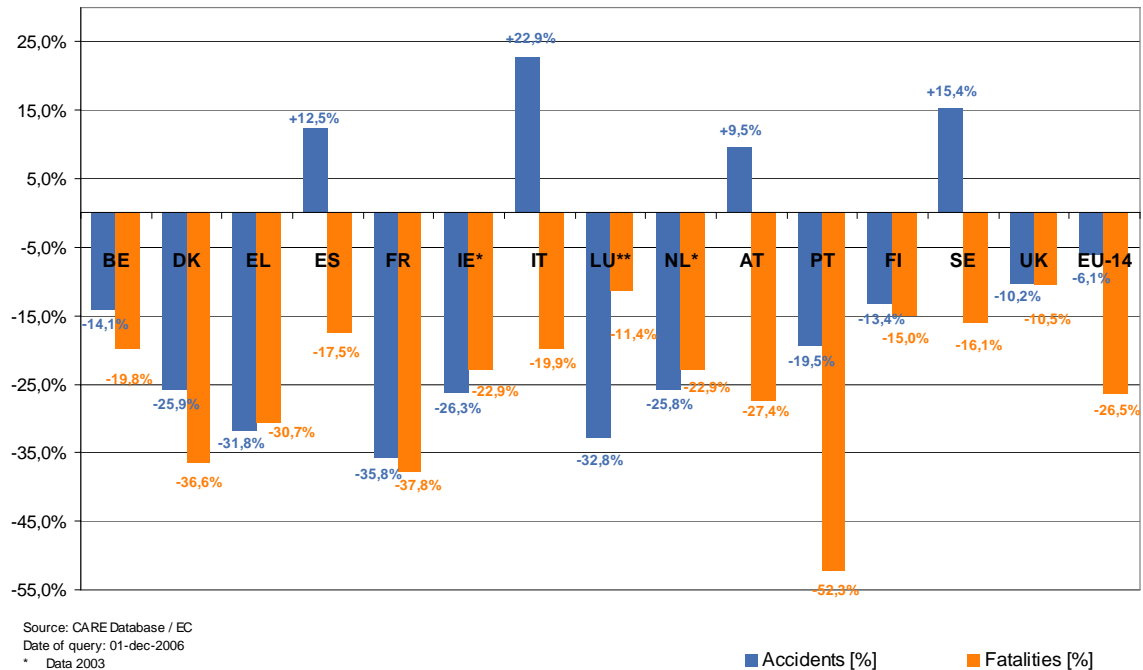


Table 1: Annual number of injury accidents by country, 1995-2004

	1995	1996	1997	1998	1999	2000	2001	2002	2003	2004
BE	50.744	48.750	50.078	51.167	51.601	49.065	47.444	43.693	43.853	43.565
DK	8.373	8.080	8.004	7.556	7.605	7.340	6.856	7.122	6.748	6.207
EL	22.798	23.775	24.295	24.819	24.231	23.001	19.671	16.809	15.751	15.547
ES	83.586	85.588	86.062	97.570	97.811	101.729	100.393	98.433	99.987	94.009
FR	132.949	125.406	125.202	124.387	124.524	121.223	116.745	105.470	90.220	85.390
IE	8.117	8.686	8.496	8.239	7.806	7.749	6.909	6.625	5.984	-
IT	182.761	190.068	190.031	204.615	225.646	229.034	235.409	239.354	231.740	224.553
LU	1.145	1.050	1.016	1.058	1.076	899	772	769	-	-
NL	42.641	41.041	41.036	41.299	42.271	37.946	35.313	33.538	31.635	-
AT	38.956	38.253	39.695	39.225	42.348	42.126	43.073	43.175	43.423	42.657
PT	48.339	49.265	49.417	49.319	47.966	44.159	42.521	42.219	41.495	38.930
FI	7.812	7.274	6.980	6.902	6.997	6.633	6.451	6.196	6.907	6.767
SE	15.626	15.321	15.752	15.514	15.834	15.770	15.796	16.947	18.365	18.029
UK	237.336	243.286	247.479	246.410	242.610	242.117	236.461	228.535	220.079	213.043
EU-14	881.183	885.843	893.543	918.080	938.326	928.791	913.814	888.885	85.695 <sup>1</sup>	82.708 <sup>1</sup>
Yearly Change	-	0,5%	0,9%	2,7%	2,2%	-1,0%	-1,6%	-2,7%	-3,6%	-3,5%

Source: CARE Database / EC  
Date of query: 01-dec-2006

<sup>1</sup> Data of the last available year were used when calculating EU14 totals for IE (2003), LU (2002) and NL (2003).

Figure 9: Annual number of injury accidents by country (BE – IT), 1995-2004\*

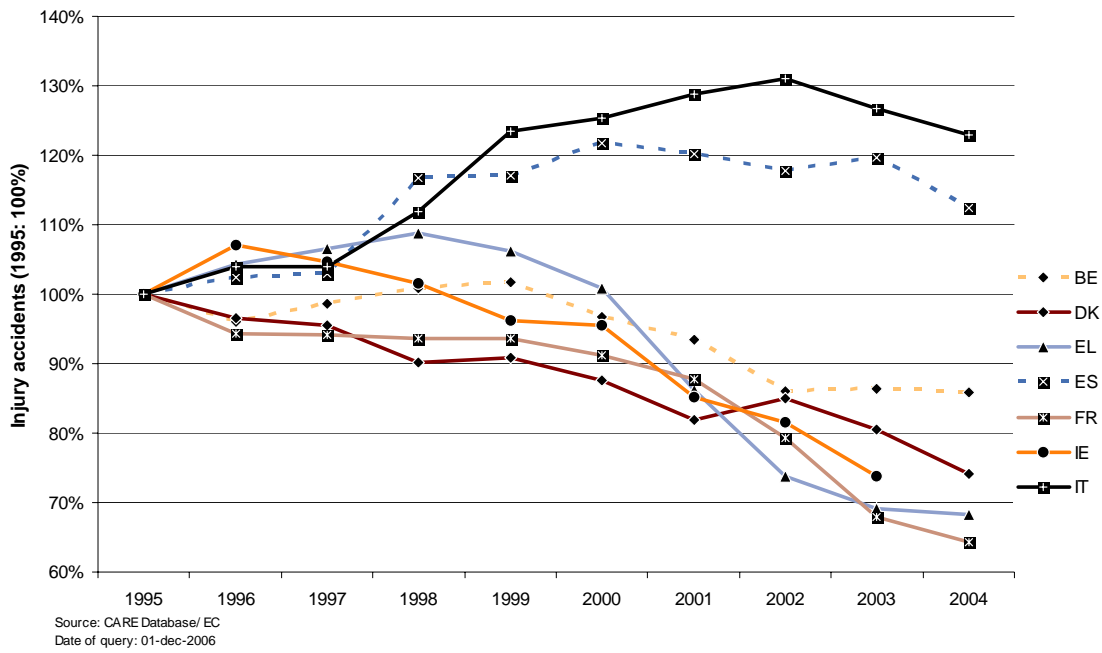
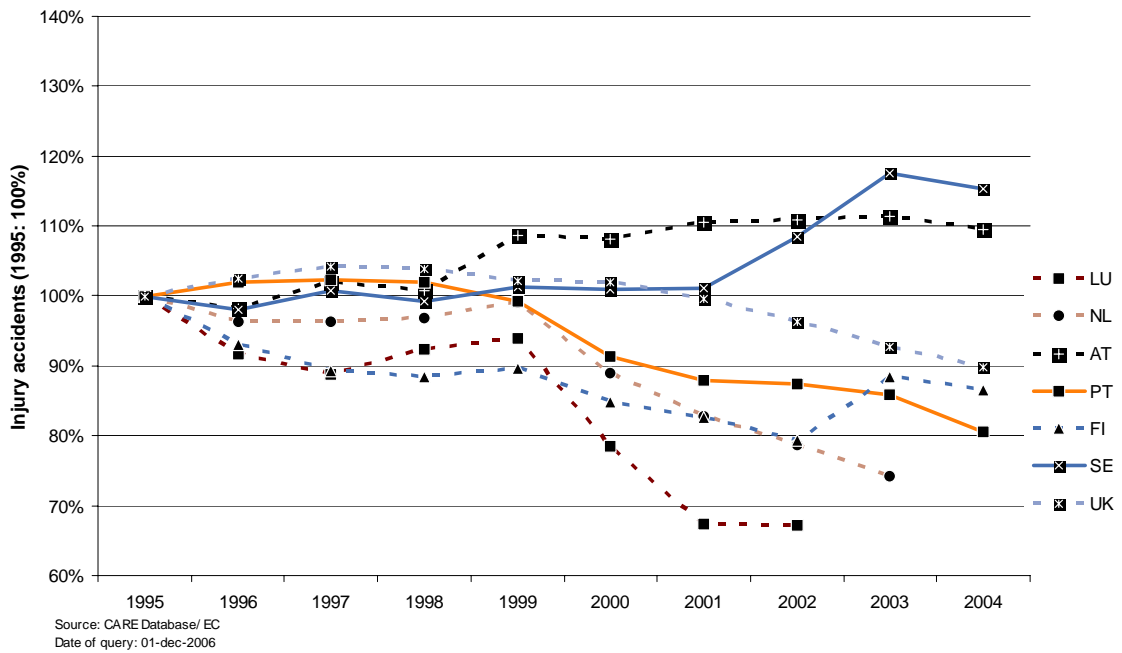


Figure 10: Annual number of injury accidents by country (LU-UK), 1995-2004\*



\* IE & NL: 2003, LU: 2002

**Table 2: Annual number of fatalities by country, 1995-2004\***

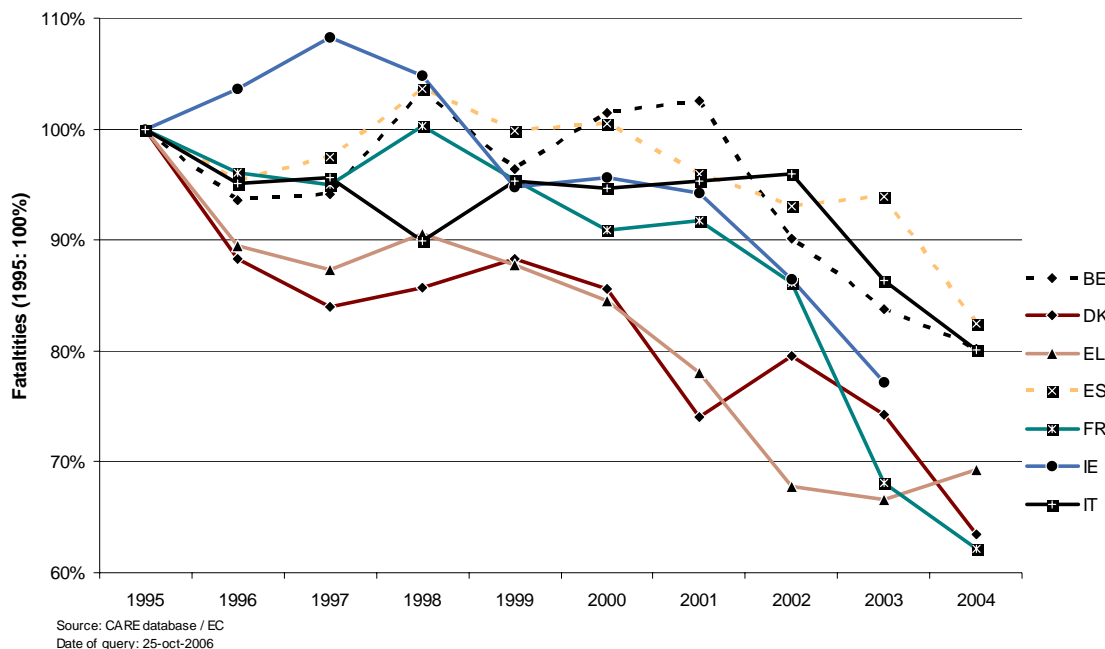
	1995	1996	1997	1998	1999	2000	2001	2002	2003	2004
BE	1.449	1.356	1.364	1.500	1.397	1.470	1.486	1.306	1.214	1.162
DK	582	514	489	499	514	498	431	463	432	369
EL	2.411	2.157	2.105	2.182	2.116	2.037	1.880	1.634	1.605	1.670
ES	5.749	5.482	5.604	5.957	5.738	5.777	5.516	5.347	5.400	4.741
FR	8.891	8.541	8.444	8.918	8.487	8.079	8.160	7.655	6.058	5.530
IE	437	453	473	458	414	418	412	378	337	-
IT	7.020	6.676	6.713	6.314	6.688	6.649	6.691	6.739	6.065	5.625
LU	70	71	60	57	58	76	70	62	-	-
NL	1.334	1.180	1.163	1.066	1.090	1.082	993	987	1.028	-
AT	1.210	1.027	1.105	963	1.079	976	958	956	931	878
PT	2.711	2.730	2.521	2.126	1.995	1.857	1.671	1.675	1.546	1.294
FI	441	404	438	400	431	396	433	415	379	375
SE	572	537	541	531	580	591	583	560	529	480
UK	3.765	3.740	3.743	3.581	3.564	3.580	3.598	3.581	3.658	3.368
EU-14	36.642	34.868	34.763	34.552	34.151	33.486	32.882	31.758	29.244 <sup>1</sup>	26.919 <sup>1</sup>
Yearly Change	-	-4,8%	-0,3%	-0,6%	-1,2%	-1,9%	-1,8%	-3,4%	-7,9%	-8,0%

Source: CARE Database / EC

Date of query: 17-oct-2006

<sup>1</sup> Data of the last available year were used when calculating EU14 totals for IE (2003), LU (2002) and NL (2003).

**Figure 11: Annual number of fatalities by country (BE-IT), 1995-2004\***



Source: CARE database / EC  
Date of query: 25-oct-2006

\* IE & NL: 2003, LU: 2002

Figure 12: Annual number of fatalities by country (LU-UK), 1995-2004\*

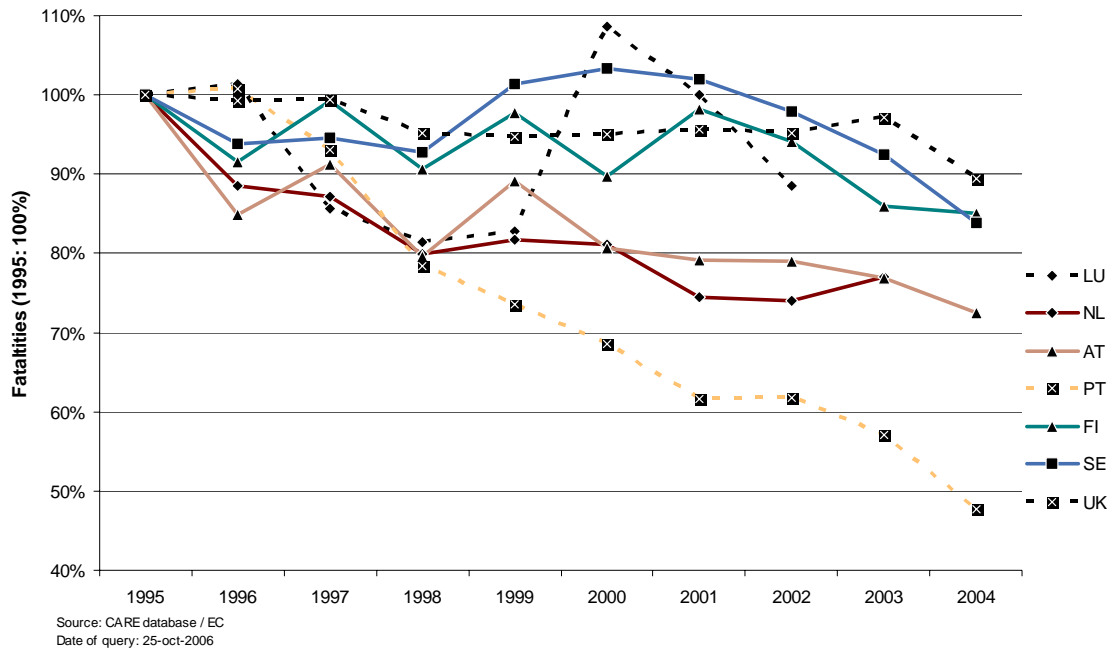


Table 3: Annual number of fatal accidents\*\* by country, 1995-2004\*

	1995	1996	1997	1998	1999	2000	2001	2002	2003	2004
BE	1.337	1.237	1.255	1.345	1.299	1.356	1.378	1.217	1.142	1.096
DK	539	448	461	462	467	436	354	371	382	341
EL	1.798	1.870	1.837	1.921	1.876	1.803	1.669	1.438	1.400	1.484
ES	4.193	4.042	4.062	4.319	4.239	4.372	4.170	4.031	4.084	3.643
FR	7.453	7.178	7.130	7.514	7.185	6.811	6.920	6.549	5.168	4.766
IE	405	415	424	408	373	362	360	346	301	-
IT	5.819	5.590	5.605	5.304	6.022	6.055	6.074	6.099	5.463	5.082
LU	65	67	57	56	53	68	65	52	-	-
NL	1.227	1.099	1.076	988	1.028	1.006	932	913	940	-
AT	1.084	933	1.005	865	947	889	861	873	848	818
PT	1.856	1.880	1.732	1.647	1.582	1.450	1.316	1.323	1.222	1.024
FI	411	355	391	367	391	354	386	367	346	323
SE	519	488	493	490	516	535	511	490	460	430
UK	3.412	3.404	3.434	3.276	3.267	3.257	3.313	3.260	3.375	3.106
EU-14	30.118	29.006	28.962	28.962	29.245	28.754	28.309	27.329	25.183 <sup>1</sup>	23.406 <sup>1</sup>
Yearly Change	-	-3,7%	-0,2%	0,0%	1,0%	-1,7%	-1,5%	-3,5%	-7,9%	-7,1%

Source: CARE Database / EC  
Date of query: 17-oct-2006

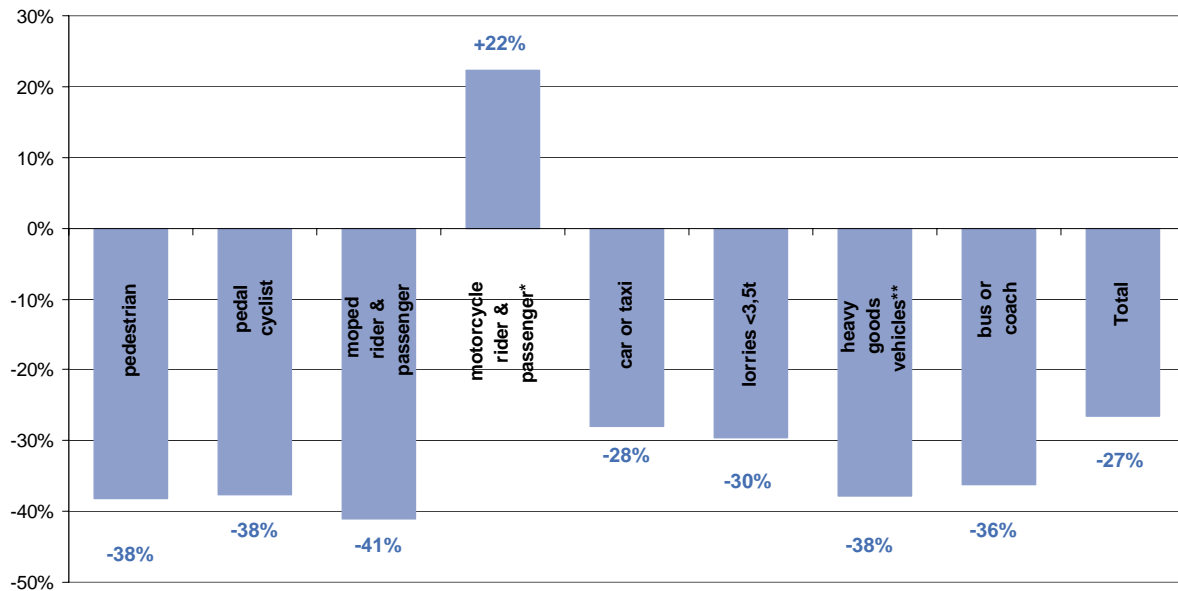
<sup>1</sup> Data of the last available year were used when calculating EU-14 totals for IE (2003), LU (2002) and NL (2003).

\* IE & NL: 2003, LU: 2002

\*\* Note that numbers have not been corrected for 30-day definition for EL, ES, FR, IT and PT

## 3.2 Time series related to mode of transport

Figure 13: Percentage change in number of fatalities by mode of transport in EU-14 (2004 compared to 1995)



Source: CARE Database/ EC  
Date of query: 25-oct-2006

\* motorcycles including mopeds (IE and UK), \*\* heavy goods vehicles include lorries < 3,5t (IT and LU)

Table 4: Annual number of pedestrian fatalities by country, 1995-2004

	1995	1996	1997	1998	1999	2000	2001	2002	2003	2004
BE	149	154	142	162	154	142	158	127	113	101
DK	118	68	87	73	82	99	49	63	49	43
EL	481	422	409	417	399	375	338	279	257	293
ES	1.000	960	967	996	906	899	846	776	786	683
FR	1.086	1.043	982	1.044	932	838	822	866	626	581
IE	113	115	130	114	92	85	89	86	64	-
IT	945	985	893	844	847	897	932	1.163	781	710
LU	8	9	8	3	2	11	11	6	-	-
NL	142	109	119	110	111	106	106	97	97	-
AT	200	157	156	165	182	140	117	160	132	132
PT	598	624	549	406	393	384	337	339	280	233
FI	72	70	69	62	67	62	62	40	59	49
SE	71	74	72	69	86	73	87	58	55	67
UK	1.085	1.039	1.010	946	909	889	858	808	802	694
EU-14	6.068	5.829	5.593	5.411	5.162	5.000	4.812	4.868	4.085 <sup>1</sup>	4.495 <sup>1</sup>
Yearly Change	-	-3,9%	-4,0%	-3,3%	-4,6%	-3,1%	-3,8%	1,2%	-16,1%	10,0%
Total - all users	36.642	34.868	34.763	34.552	34.151	33.486	32.882	31.758	29.244 <sup>1</sup>	26.919 <sup>1</sup>
% pedestrians	16,6%	16,7%	16,1%	15,7%	15,1%	14,9%	14,6%	15,3%	14,0%	16,7%

Source: CARE Database / EC  
Date of query: 17-oct-2006

<sup>1</sup> Data of the last available year were used when calculating EU-14 totals for IE (2003), LU (2002) and NL (2003).

**Table 5: Annual number of pedal cyclist fatalities by country (includes all riders and passengers of pedal cycles), 1995-2004**

	1995	1996	1997	1998	1999	2000	2001	2002	2003	2004
BE	128	121	122	135	122	134	130	105	110	79
DK	77	88	65	58	59	58	56	52	47	53
EL	34	28	32	34	23	22	29	14	21	24
ES	123	101	116	114	119	84	100	96	78	88
FR	368	296	318	296	295	244	235	208	185	177
IE	28	22	24	21	14	10	12	18	10	-
IT	391	413	428	364	402	381	331	314	326	296
LU	3	1	1	1	0	1	1	1	-	-
NL	267	233	242	194	194	198	195	169	188	-
AT	77	73	66	57	68	62	55	80	56	58
PT	96	75	75	74	41	56	50	58	63	47
FI	74	46	61	54	63	53	59	53	39	26
SE	57	49	42	58	45	47	43	42	35	27
UK	217	208	187	165	173	131	140	133	116	136
EU-14	1.940	1.755	1.779	1.626	1.618	1.481	1.436	1.343	1.275 <sup>1</sup>	1.209 <sup>1</sup>
Yearly Change	-	-9,6%	1,4%	-8,6%	-0,4%	-8,5%	-3,0%	-6,4%	-5,1%	-5,2%
Total - all users	36.642	34.868	34.763	34.552	34.151	33.486	32.882	31.758	29.244 <sup>1</sup>	26.919 <sup>1</sup>
% pedal cyclists	5,3%	5,0%	5,1%	4,7%	4,7%	4,4%	4,4%	4,2%	4,4%	4,5%

Source: CARE Database / EC  
Date of query: 17-oct-2006

<sup>1</sup> Data of the last available year were used when calculating EU-14 totals for IE (2003), LU (2002) and NL (2003).

**Table 6: Annual number of moped rider & passenger fatalities by country, 1995-2004**

	1995	1996	1997	1998	1999	2000	2001	2002	2003	2004
BE	71	67	68	78	56	66	63	68	45	33
DK	28	26	27	39	41	47	43	38	43	46
EL	237	122	114	114	108	90	77	55	53	55
ES	386	387	440	506	515	474	461	383	391	361
FR	435	452	440	390	425	402	409	354	353	339
IE*	-	-	-	-	-	-	-	-	-	-
IT	685	674	702	675	611	551	508	420	461	388
LU	2	0	1	1	0	0	0	0	-	-
NL	118	107	88	89	107	107	78	98	94	-
AT	67	47	58	33	48	44	37	46	47	44
PT	530	478	439	316	253	225	184	145	157	121
FI	20	17	16	16	8	9	7	7	12	14
SE	9	14	13	12	12	10	9	12	9	18
UK*	-	-	-	-	-	-	-	-	-	-
EU-12	2.588	2.391	2.405	2.269	2.184	2.024	1.876	1.626	1.665 <sup>1</sup>	1.513 <sup>1</sup>
Yearly Change	-	-7,6%	0,6%	-5,7%	-3,8%	-7,3%	-7,3%	-13,3%	2,4%	-9,1%
Total - all road users	36.642	34.868	34.763	34.552	34.151	33.486	32.882	31.758	29.244 <sup>1</sup>	26.919 <sup>1</sup>
% mopedists	7,1%	6,9%	6,9%	6,6%	6,4%	6,0%	5,7%	5,1%	5,7%	5,6%

Source: CARE Database / EC  
Date of query: 17-oct-2006

<sup>1</sup> Data of the last available year were used when calculating EU-12 totals for IE (2003), LU (2002) and NL (2003).

\* Ireland and United Kingdom do not separate Mopeds and Motorcyclists; Mopedists are counted in the Motorcycle table (see Table 7).



**Table 7: Annual number of motorcycle rider & passenger fatalities by country, 1995-2004**

	1995	1996	1997	1998	1999	2000	2001	2002	2003	2004
BE	116	107	125	121	142	118	147	158	124	120
DK	35	23	19	21	26	24	12	24	25	23
EL	391	419	392	455	453	406	426	341	310	379
ES	479	457	459	421	387	392	370	401	367	399
FR	728	718	811	889	856	826	947	944	773	866
IE*	57	58	68	37	43	40	50	44	55	-
IT	502	519	520	516	569	728	807	869	980	1.070
LU	2	6	2	6	5	8	6	0	-	-
NL	90	91	92	76	75	89	76	93	95	-
AT	85	84	111	87	103	112	107	89	109	98
PT	263	255	241	241	253	212	229	225	213	181
FI	13	16	8	9	13	10	16	22	23	22
SE	32	40	36	40	36	39	38	37	47	56
UK*	454	447	525	509	556	612	594	628	715	607
EU-14	3.247	3.239	3.408	3.428	3.518	3.616	3.825	3.874	3.836 <sup>1</sup>	3.971 <sup>1</sup>
Yearly Change	-	-0,2%	5,2%	0,6%	2,6%	2,8%	5,8%	1,3%	-1,0%	3,5%
Total - all users	36.642	34.868	34.763	34.552	34.151	33.486	32.882	31.758	29.244 <sup>1</sup>	26.919 <sup>1</sup>
% motorcyclists	8,9%	9,3%	9,8%	9,9%	10,3%	10,8%	11,6%	12,2%	13,1%	14,8%

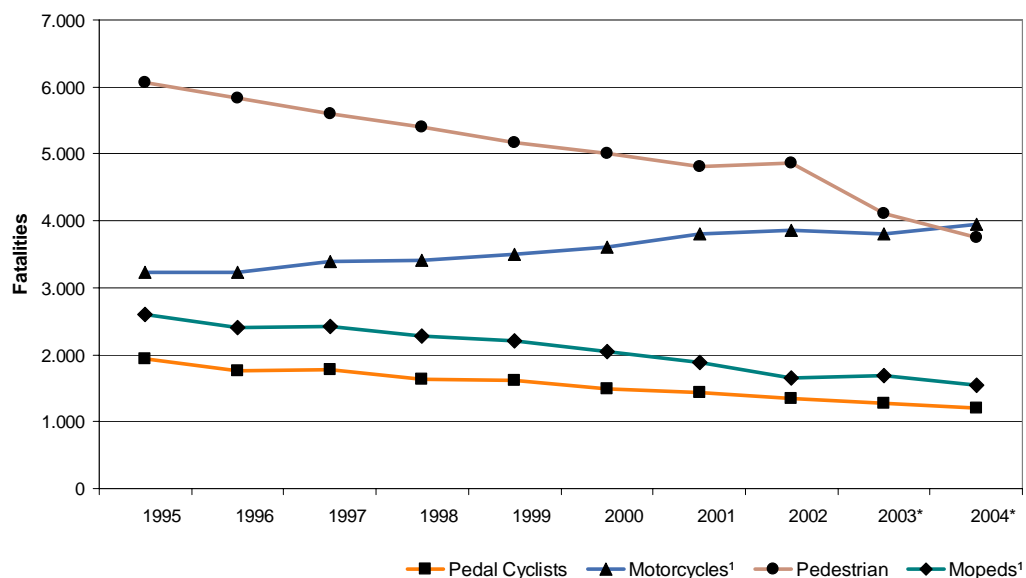
Source: CARE Database / EC

Date of query: 17-oct-2006

<sup>1</sup> Data of the last available year were used when calculating EU-14 totals for IE (2003), LU (2002) and NL (2003).

\* Ireland and United Kingdom do not separate Mopeds and Motorcyclists; Mopedists are counted as "Motorcyclists".

**Figure 14: Annual number of fatalities by mode of transport (in which the fatality was travelling, includes driver & passenger), EU-14, 1995-2004**



Source: CARE Database / EC

Date of query: 30-oct-2006

\* Data of the last available year were used when calculating EU-14 totals for IE (2003), LU (2002) and NL (2003)

<sup>1</sup> IE and UK: motorcycles including mopeds (motorcycles and mopeds are not counted separately)

**Table 8: Annual number of fatalities in accidents involving cars or taxis by country  
(Attention: fatalities in cars or taxis plus all opponents fatalities), 1995-2004**

	1995	1996	1997	1998	1999	2000	2001	2002	2003	2004
BE	1.242	1.134	1.127	1.244	1.134	1.219	1.223	1.075	925	825
DK	442	392	362	385	384	360	332	340	314	262
EL	1.481	1.367	1.365	1.424	1.387	1.376	1.248	1.144	1.108	1.168
ES	4.503	4.247	4.306	4.632	4.458	4.527	4.328	4.244	4.363	3.659
FR	7.198	7.006	6.864	7.302	6.929	6.614	6.613	6.190	4.796	4.526
IE	294	328	341	344	325	352	318	294	246	-
IT	5.840	5.519	5.562	5.218	5.471	5.424	5.442	5.475	4.743	4.392
LU*	57	61	53	49	53	67	63	58	-	-
NL	1.004	864	855	803	769	764	707	721	697	-
AT	978	852	882	766	855	724	731	749	713	677
PT	1.794	1.829	1.785	1.570	1.313	1.212	1.034	1.104	999	833
FI	336	306	332	317	324	302	331	320	282	274
SE	475	425	444	424	481	480	467	463	429	392
UK	3.067	3.068	3.105	2.950	2.911	2.874	2.863	2.889	2.946	2.737
EU-14	28.711	27.398	27.383	27.428	26.794	26.295	25.700	25.066	22.619 <sup>1</sup>	20.746 <sup>1</sup>
Yearly Change		-4,6%	-0,1%	0,2%	-2,3%	-1,9%	-2,3%	-2,5%	-9,8%	-8,3%
Total - all users	36.642	34.868	34.763	34.552	34.151	33.486	32.882	31.758	29.244 <sup>1</sup>	26.919 <sup>1</sup>
% car or taxi	78%	79%	79%	79%	78%	79%	78%	79%	77%	77%

Source: CARE Database / EC

Date of query: 17-oct-2006

\* Including data on lorries <3,5t

<sup>1</sup> Data of the last available year were used when calculating EU-14 totals for IE (2003), LU (2002) and NL (2003).

**Table 9: Annual number of fatalities in accidents involving heavy goods vehicles >3,5t by country  
(Attention: fatalities in heavy goods vehicles plus all opponents fatalities), 1995-2004**

	1995	1996	1997	1998	1999	2000	2001	2002	2003	2004
BE	215	192	195	228	193	204	193	178	136	143
DK	93	102	93	88	86	97	78	80	69	65
EL	405	245	242	277	268	205	220	219	217	181
ES	951	839	888	959	905	920	803	860	834	766
FR	1.242	1.064	1.027	1.100	1.000	964	970	915	720	727
IE	79	54	85	63	61	67	70	42	54	-
IT	406	484	476	421	562	582	411	359	358	336
LU	8	8	6	7	3	5	6	12	-	-
NL	226	209	177	140	175	168	169	129	158	-
AT	181	136	150	145	177	143	122	143	140	144
PT	377	365	356	219	296	284	197	214	213	187
FI	79	91	112	88	121	77	118	105	97	107
SE	98	100	97	117	93	119	118	135	92	59
UK	628	605	554	605	641	581	607	561	548	478
EU-14	4.988	4.495	4.459	4.458	4.581	4.416	4.082	3.953	3.648 <sup>1</sup>	3.417 <sup>1</sup>
Yearly Change		-9,9%	-0,8%	0,0%	2,8%	-3,6%	-7,6%	-3,2%	-7,7%	-6,3%
Total - all users	36.642	34.868	34.763	34.552	34.151	33.486	32.882	31.758	29.244 <sup>1</sup>	26.919 <sup>1</sup>
% HGV > 3,5t	13,6%	12,9%	12,8%	12,9%	13,4%	13,2%	12,4%	12,4%	12,5%	12,7%

Source: CARE Database / EC

Date of query: 19-oct-2006

<sup>1</sup> Data of the last available year were used when calculating EU-14 totals for IE (2003), LU (2002) and NL (2003).

**Table 10: Annual number of fatalities in accidents involving lorries <3,5t by country (Attention: fatalities in lorries <3,5t plus all opponents fatalities), 1995-2004**

	1995	1996	1997	1998	1999	2000	2001	2002	2003	2004
BE	86	93	92	98	122	128	116	113	78	83
DK	106	84	87	89	93	75	75	72	79	43
EL	399	441	342	301	289	330	261	245	223	220
ES	819	742	839	846	783	776	796	783	746	706
FR	394	415	403	428	434	267	307	307	270	234
IE	55	59	53	63	40	50	55	48	43	-
IT	636	437	407	361	468	360	476	428	337	286
LU*	-	-	-	-	-	-	-	-	-	-
NL	147	146	152	117	147	135	136	121	169	-
AT	62	50	57	55	52	62	67	69	68	56
PT	498	576	371	195	422	389	407	365	357	275
FI	51	45	58	29	39	47	29	36	45	33
SE	34	41	39	27	30	45	38	32	25	19
UK	366	329	306	310	284	314	332	323	335	297
EU-14	3.653	3.458	3.206	2.919	3.204	2.978	3.094	2.941	2.774 <sup>1</sup>	2.464 <sup>1</sup>
Yearly Change		-5,4%	-7,3%	-8,9%	9,8%	-7,0%	3,9%	-5,0%	-5,7%	-11,2%
Total - all users	36.642	34.868	34.763	34.552	34.151	33.486	32.882	31.758	29.244 <sup>1</sup>	26.919 <sup>1</sup>
% lorries < 3.5t	10,0%	9,9%	9,2%	8,4%	9,4%	8,9%	9,4%	9,3%	9,5%	9,2%

Source: CARE Database / EC

Date of query: 19-oct-2006

<sup>1</sup> Data of the last available year were used when calculating EU-14 totals for IE (2003), LU (2002) and NL (2003).

\* Data on lorries <3,5t included in car or taxi (see Table 8)

**Table 11: Annual number of fatalities by country in accidents involving buses or coaches (Attention: fatalities in buses plus all opponents fatalities), 1995-2004**

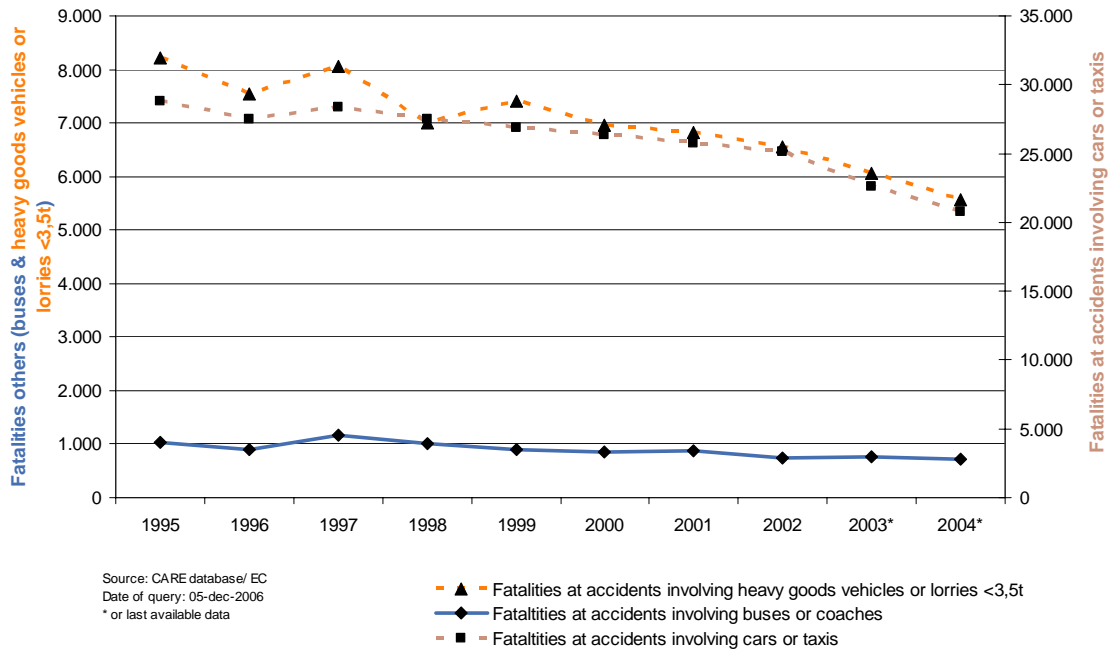
	1995	1996	1997	1998	1999	2000	2001	2002	2003	2004
BE	20	37	37	47	23	28	29	31	29	31
DK	22	24	15	11	25	14	14	22	26	15
EL	81	66	79	93	79	71	59	60	94	48
ES	153	154	180	184	163	144	135	109	126	80
FR	156	106	180	122	117	136	114	104	87	99
IE	14	15	11	16	14	12	9	8	2	-
IT	147	121	137	105	131	119	113	105	122	125
LU	4	5	3	0	0	4	6	4	-	-
NL	20	23	29	29	21	23	27	21	21	-
AT	46	18	25	14	41	36	33	17	20	24
PT	91	86	104	145	58	57	66	51	26	41
FI	26	12	20	22	18	18	28	17	13	29
SE	28	35	15	16	23	16	32	29	33	16
UK	220	184	174	198	182	176	215	165	160	154
EU-14	1.029	885	1.009	1.001	896	854	880	743	763 <sup>1</sup>	689 <sup>1</sup>
Yearly Change		-14,0%	14,0%	-0,8%	-10,5%	-4,7%	3,0%	-15,5%	2,7%	-9,7%
Total - all users	36.642	34.868	34.763	34.552	34.151	33.486	32.882	31.758	29.244 <sup>1</sup>	26.919 <sup>1</sup>
% buses	2,8%	2,5%	2,9%	2,9%	2,6%	2,6%	2,7%	2,3%	2,6%	2,6%

Source: CARE Database / EC

Date of query: 19-oct-2006

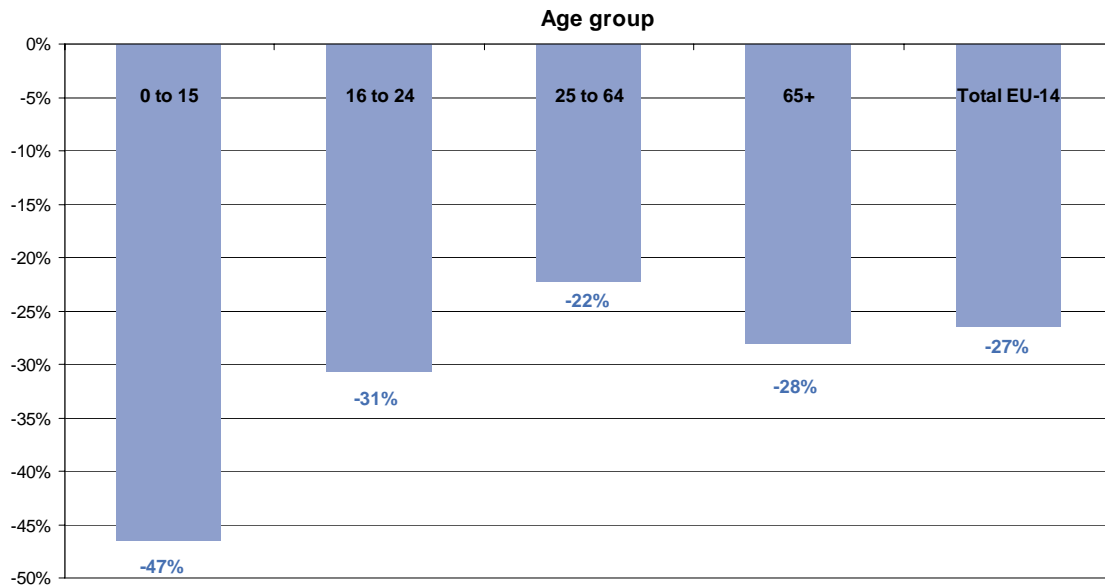
<sup>1</sup> Data of the last available year were used when calculating EU-14 totals for IE (2003), LU (2002) and NL (2003).

**Figure 15: Annual number of fatalities involving different modes of transport, EU-14  
(Attention: fatalities in specific mode of transport plus all opponents fatalities), 1995-2004**



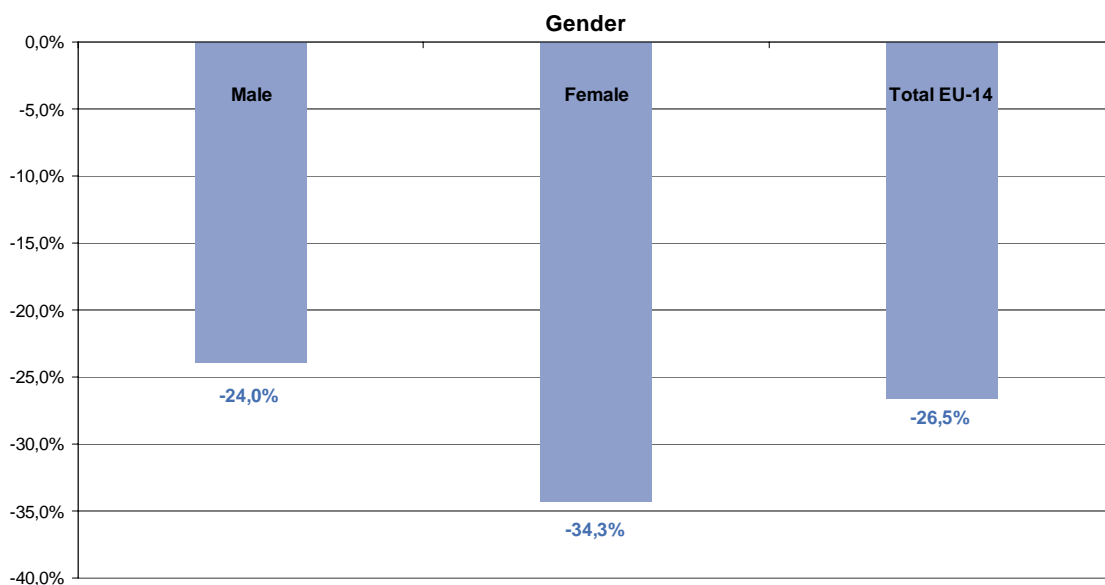
### 3.3 Time series related to person age and gender

Figure 16: Percentage change in number of fatalities by person age group (EU-14), 2004\* compared to 1995



Source: CARE Database/ EC  
Date of query: 25-oct-2006

Figure 17: Increase / decrease of number of fatalities by gender (EU-14), 2004\* compared to 1995



Source: CARE Database/ EC  
Date of query: 25-oct-2006

\* IE & NL: 2003, LU: 2002

**Table 12: Annual number of fatalities by age group by country, 1995-2000**

	1995				1996				1997			
	0 to 15	16 to 24	25 to 64	65+	0 to 15	16 to 24	25 to 64	65+	0 to 15	16 to 24	25 to 64	65+
BE	93	327	778	237	63	305	712	267	61	295	761	237
DK	35	147	241	159	45	114	226	129	28	113	216	132
EL	84	530	1.333	454	85	486	1.127	437	84	466	1.127	406
ES	269	1.316	3.175	844	236	1.203	3.068	855	223	1.239	3.107	900
FR	498	2.174	4.689	1.522	469	1.995	4.489	1.578	493	2.085	4.361	1.494
IE	31	128	177	67	31	124	197	61	34	127	202	66
IT	247	1.574	3.405	1.497	240	1.428	3.277	1.435	217	1.300	3.381	1.548
LU	1	19	38	8	2	15	46	3	3	17	28	9
NL	100	282	643	309	86	271	550	273	79	246	572	266
AT	64	303	630	213	57	261	513	195	43	298	552	212
PT	163	701	1.386	430	139	633	1.447	485	139	580	1.331	441
FI	39	71	212	119	40	87	175	102	36	72	207	123
SE	35	94	266	175	29	89	238	181	32	73	265	171
UK	289	887	1.678	890	285	890	1.760	781	268	903	1.784	788
EU-14	1.947	8.553	18.652	6.925	1.808	7.901	17.825	6.782	1.739	7.815	17.894	6.792
% by age group	5,3%	23,3%	50,9%	18,9%	5,2%	22,7%	51,1%	19,5%	5,0%	22,5%	51,5%	19,5%

	1998				1999				2000			
	0 to 15	16 to 24	25 to 64	65+	0 to 15	16 to 24	25 to 64	65+	0 to 15	16 to 24	25 to 64	65+
BE	99	334	795	260	72	319	769	233	67	368	784	238
DK	22	99	255	123	43	111	243	117	31	109	224	134
EL	74	466	1.167	445	66	475	1.132	415	54	421	1.107	428
ES	260	1.365	3.334	890	258	1.255	3.187	910	228	1.253	3.270	849
FR	455	2.198	4.671	1.587	421	2.172	4.396	1.443	414	1.933	4.221	1.370
IE	40	138	189	80	26	114	188	71	24	138	195	44
IT	189	1.231	3.218	1.379	193	1.281	3.521	1.391	165	1.309	3.471	1.365
LU	2	8	39	7	2	12	37	7	3	17	45	10
NL	56	254	529	227	82	247	519	242	66	271	510	235
AT	48	205	502	208	51	254	549	225	35	233	518	190
PT	152	519	1.086	365	96	477	1.064	340	89	393	1.013	342
FI	24	72	200	104	33	72	230	96	23	64	203	106
SE	33	84	266	148	44	82	281	173	24	113	300	154
UK	224	787	1.797	771	239	783	1.765	758	204	782	1.908	679
EU-14	1.677	7.759	18.049	6.593	1.625	7.654	17.881	6.420	1.427	7.405	17.769	6.144
% by age group	4,9%	22,5%	52,2%	19,1%	4,7%	22,1%	51,6%	18,5%	4,1%	21,3%	51,0%	17,6%

Source: CARE Database / EC  
Date of query: 19-oct-2006

**Table 13: Annual number of fatalities by age group by country, 2001-2004**

	2001				2002				2003			
	0 to 15	16 to 24	25 to 64	65+	0 to 15	16 to 24	25 to 64	65+	0 to 15	16 to 24	25 to 64	65+
BE	71	319	824	264	45	300	739	210	39	272	660	240
DK	29	83	217	102	16	100	244	103	25	80	228	99
EL	56	427	981	385	51	326	898	340	59	364	840	322
ES	208	1.123	3.165	867	189	1.069	3.106	835	189	1.128	3.102	817
FR	347	2.058	4.276	1.393	288	1.855	4.061	1.361	244	1.483	3.123	1.120
IE	33	126	197	47	23	93	180	60	17	93	166	53
IT	199	1.194	3.526	1.276	228	1.216	3.554	1.394	173	1.067	3.275	1.266
LU	6	18	39	7	3	13	41	5	-	-	-	-
NL	61	205	505	222	55	249	469	213	71	226	510	221
AT	34	212	526	186	33	207	505	211	45	207	481	197
PT	65	375	868	320	72	315	960	304	63	268	887	304
FI	24	99	214	96	20	86	210	99	25	69	190	95
SE	25	115	296	147	27	111	283	139	28	109	274	118
UK	229	859	1.826	652	192	887	1.816	655	186	932	1.865	658
EU-14	1.387	7.213	17.459	5.965	1.241	6.827	17.066	5.929	1.167 <sup>1</sup>	6.311 <sup>1</sup>	15.642 <sup>1</sup>	5.516 <sup>1</sup>
% by age group	4,2%	21,9%	53,1%	18,1%	3,9%	21,5%	53,7%	18,7%	4,0%	21,5%	53,4%	18,8%

	2004			
	0 to 15	16 to 24	25 to 64	65+
BE	35	263	659	201
DK	22	75	192	80
EL	62	343	928	317
ES	162	927	2.787	746
FR	209	1.440	2.906	962
IE	-	-	-	-
IT	159	1.032	3.027	1.165
LU	-	-	-	-
NL	-	-	-	-
AT	30	198	471	177
PT	55	245	747	230
FI	15	93	170	97
SE	24	87	230	139
UK	177	897	1.687	589
EU-14	1.041 <sup>1</sup>	5.932 <sup>1</sup>	14.520 <sup>1</sup>	4.982 <sup>1</sup>
% by age group	3,5%	20,8%	51,3%	17,5%

Source: CARE Database / EC

Date of query: 19-oct-2006

<sup>1</sup>Data of the last available year were used when calculating EU-14 totals for IE (2003), LU (2002) and NL (2003).

Figure 18: Annual number of fatalities by year and age, EU-14 (1995 and 2004\*)

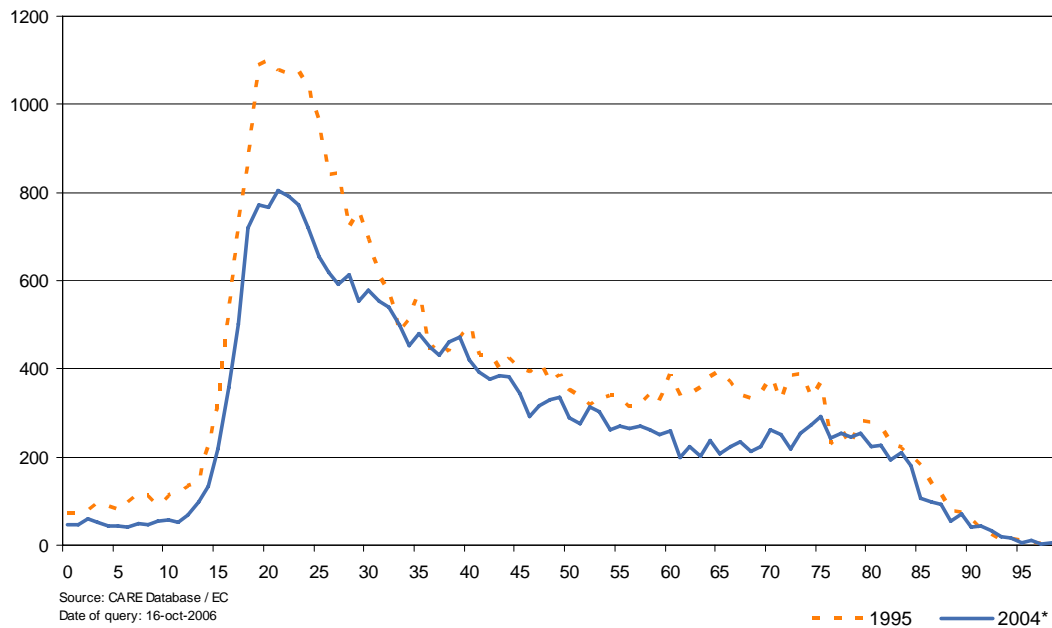


Table 14: Annual number of female fatalities by country, 1995-2004

	1995	1996	1997	1998	1999	2000	2001	2002	2003	2004
BE	354	336	345	419	376	367	384	341	297	250
DK	199	144	122	142	142	151	117	119	122	98
EL	526	508	449	477	453	440	416	351	289	364
ES	1.437	1.335	1.345	1.478	1.409	1.338	1.325	1.263	1.246	1.124
FR	2.471	2.380	2.245	2.477	2.329	1.951	2.057	1.869	1.435	1.349
IE	117	108	131	115	118	104	103	101	79	-
IT	1.672	1.628	1.567	1.481	1.496	1.531	1.667	1.531	1.284	1.133
LU	19	15	19	8	16	17	17	12	-	-
NL	383	342	336	294	282	294	246	246	262	-
AT	309	289	288	269	320	246	251	276	251	215
PT	563	568	508	392	390	347	363	348	302	264
FI	113	126	150	111	131	133	137	114	107	118
SE	167	161	136	121	158	153	149	137	138	116
UK	1.122	1.030	1.030	1.026	958	914	864	915	920	829
EU-14	9.452	8.971	8.672	8.810	8.578	7.985	8.095	7.622	6.745 <sup>1</sup>	6.213 <sup>1</sup>
Yearly Change	-	-5,1%	-3,3%	1,6%	-2,6%	-6,9%	1,4%	-5,8%	-11,5%	-7,9%
Total - all users	36.642	34.868	34.763	34.552	34.151	33.486	32.882	31.758	29.244 <sup>1</sup>	26.919 <sup>1</sup>
% Female	25,8%	25,7%	24,9%	25,5%	25,1%	23,8%	24,6%	24,0%	23,1%	23,1%

Source: CARE Database / EC

Date of query: 19-oct-2006

<sup>1</sup>Data of the last available year were used when calculating EU-14 totals for IE (2003), LU (2002) and NL (2003).

\* IE & NL: 2003, LU: 2002



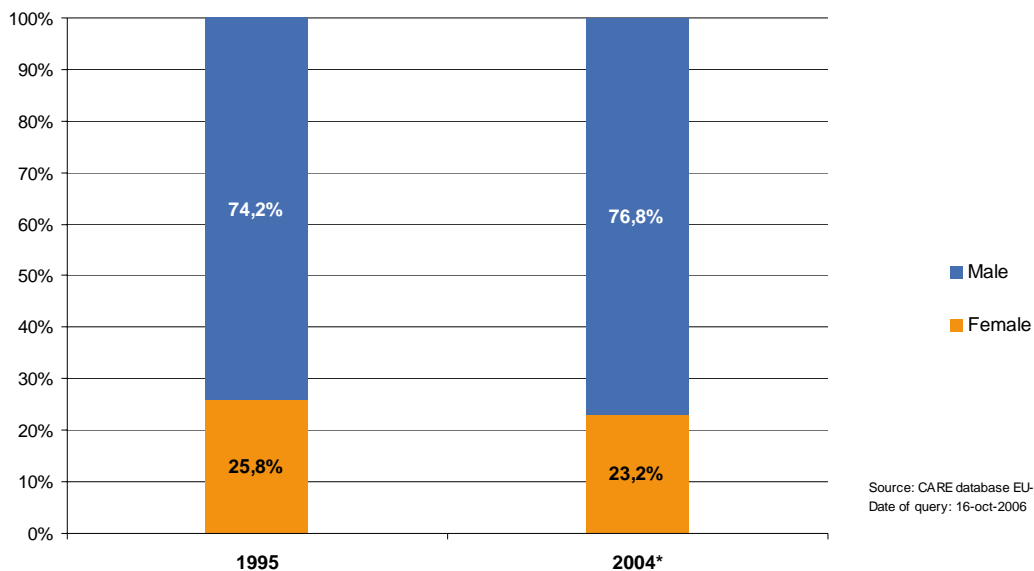
**Table 15: Annual number of male fatalities by country, 1995-2004**

	1995	1996	1997	1998	1999	2000	2001	2002	2003	2004
BE	1.094	1.020	1.018	1.080	1.021	1.102	1.102	962	915	908
DK	383	370	367	357	372	347	314	344	310	271
EL	1.874	1.639	1.647	1.688	1.653	1.590	1.458	1.277	1.313	1.303
ES	4.253	4.079	4.178	4.421	4.263	4.323	4.123	4.008	4.062	3.551
FR	6.420	6.160	6.199	6.441	6.158	6.127	6.103	5.786	4.622	4.181
IE	318	342	335	339	287	302	304	260	246	-
IT	5.348	5.048	5.145	4.833	5.192	5.118	5.024	5.208	4.781	4.492
LU	51	56	41	49	42	59	52	50	-	-
NL	951	838	827	768	802	784	743	734	758	-
AT	901	738	817	694	759	730	707	680	680	663
PT	2.148	2.152	2.011	1.734	1.599	1.504	1.306	1.326	1.244	1.028
FI	328	278	288	289	300	263	296	301	272	257
SE	403	376	404	410	422	438	433	423	391	364
UK	2.643	2.710	2.713	2.555	2.604	2.666	2.728	2.662	2.738	2.539
EU-14	27.114	25.806	25.991	25.658	25.474	25.353	24.694	24.020	22.382 <sup>1</sup>	20.612 <sup>1</sup>
Yearly Change	-	-4,8%	0,7%	-1,3%	-0,7%	-0,5%	-2,6%	-2,7%	-6,8%	-7,9%
Total - all users	36.642	34.868	34.763	34.552	34.151	33.486	32.882	31.758	29.244 <sup>1</sup>	26.919 <sup>1</sup>
% Male	74,0%	74,0%	74,8%	74,3%	74,6%	75,7%	75,1%	75,6%	76,5%	76,6%

Source: CARE Database / EC  
Date of query: 19-oct-2006

<sup>1</sup> Data of the last available year were used when calculating EU-14 totals for IE (2003), LU (2002) and NL (2003).

**Figure 19: Annual distribution of fatalities by gender, EU-14 (1995 and 2004\*)**



Source: CARE database EU-14  
Date of query: 16-oct-2006

\* IE & NL: 2003, LU: 2002

**Table 16: Annual number of female fatalities by country, drivers (1995-2004)**

	1995	1996	1997	1998	1999	2000	2001	2002	2003	2004
BE	171	163	169	190	182	184	188	155	152	138
DK	87	65	66	76	69	66	56	60	57	55
EL	60	73	60	77	69	70	65	56	50	65
ES	276	256	282	311	332	303	333	330	337	295
FR	984	983	962	1.016	1.012	880	970	842	642	655
IE	32	41	36	30	43	38	33	35	26	-
IT	547	537	515	508	490	510	635	442	423	377
LU	9	9	8	3	10	6	4	6	-	-
NL	218	206	191	167	171	184	148	142	151	-
AT	110	112	111	89	129	100	112	105	115	94
PT	81	86	88	63	80	86	70	83	70	56
FI	45	51	59	55	69	53	63	49	40	44
SE	68	67	54	53	54	67	52	56	63	41
UK	309	311	326	334	315	286	305	299	343	317
EU-14	2.996	2.960	2.927	2.971	3.024	2.833	3.034	2.661	2.474 <sup>1</sup>	2.321 <sup>1</sup>
Yearly Change	-	-1,2%	-1,1%	1,5%	1,8%	-6,3%	7,1%	-12,3%	-7,0%	-6,2%
Total - all users	36.642	34.868	34.763	34.552	34.151	33.486	32.882	31.758	29.244 <sup>1</sup>	26.919 <sup>1</sup>
% Female drivers	8,2%	8,5%	8,4%	8,6%	8,9%	8,5%	9,2%	8,4%	8,5%	8,6%

Source: CARE Database / EC

Date of query: 19-oct-2006

<sup>1</sup> Data of the last available year were used when calculating EU-14 totals for IE (2003), LU (2002) and NL (2003).**Table 17: Annual number of male fatalities by country, drivers (1995-2004)**

	1995	1996	1997	1998	1999	2000	2001	2002	2003	2004
BE	856	796	821	849	824	883	866	804	778	765
DK	264	274	265	268	270	229	243	250	243	214
EL	1.299	1.133	1.137	1.181	1.157	1.122	1.064	921	958	951
ES	2.850	2.746	2.859	3.077	2.988	3.007	2.864	2.789	2.834	2.552
FR	4.707	4.547	4.600	4.854	4.684	4.613	4.651	4.398	3.586	3.237
IE	197	206	191	203	184	189	182	166	166	-
IT	3.896	3.633	3.827	3.621	3.921	3.769	3.621	3.690	3.541	3.362
LU	41	38	31	42	35	45	40	35	-	-
NL	758	678	676	612	626	609	600	587	616	-
AT	663	545	626	518	536	561	547	519	509	512
PT	1.400	1.392	1.346	1.157	1.080	954	885	865	884	715
FI	240	199	217	200	214	205	219	231	207	181
SE	316	280	311	326	322	331	318	322	297	271
UK	1.577	1.632	1.679	1.604	1.635	1.716	1.739	1.751	1.806	1.684
EU-14	19.064	18.099	18.585	18.512	18.475	18.233	17.839	17.328	16.460 <sup>1</sup>	15.260 <sup>1</sup>
Yearly Change	-	-5,1%	2,7%	-0,4%	-0,2%	-1,3%	-2,2%	-2,9%	-5,0%	-7,3%
Total - all users	36.642	34.868	34.763	34.552	34.151	33.486	32.882	31.758	29.244 <sup>1</sup>	26.919 <sup>1</sup>
% Male drivers	52,0%	51,9%	53,5%	53,6%	54,1%	54,5%	54,3%	54,6%	56,3%	56,7%

Source: CARE Database / EC

Date of query: 19-oct-2006

<sup>1</sup> Data of the last available year were used when calculating EU-14 totals for IE (2003), LU (2002) and NL (2003).

**Table 18: Annual number of female fatalities by country, passengers (1995-2004)**

	1995	1996	1997	1998	1999	2000	2001	2002	2003	2004
BE	125	113	122	152	126	117	128	127	87	73
DK	52	51	29	36	46	42	38	40	48	29
EL	290	278	243	232	225	236	208	193	150	172
ES	815	746	717	810	741	738	706	684	658	589
FR	1.044	1.006	896	1.065	948	786	794	680	538	466
IE	49	29	54	49	36	36	41	37	31	-
IT	697	641	672	637	666	655	691	659	613	533
LU	7	6	7	4	6	6	10	4	-	-
NL	113	86	89	76	80	76	61	63	72	-
AT	112	113	110	96	112	72	90	96	79	65
PT	259	272	225	187	176	150	172	156	137	120
FI	39	36	48	33	41	45	48	43	42	49
SE	68	58	53	45	65	50	68	55	52	49
UK	400	352	345	338	343	321	291	333	301	284
EU-14	4.071	3.787	3.610	3.761	3.610	3.331	3.346	3.170	2.812 <sup>1</sup>	2.536 <sup>1</sup>
Yearly Change	-	-7,0%	-4,7%	4,2%	-4,0%	-7,7%	0,5%	-5,3%	-11,3%	-9,8%
Total - all users	36.642	34.868	34.763	34.552	34.151	33.486	32.882	31.758	29.244 <sup>1</sup>	26.919 <sup>1</sup>
% Female passengers	11,1%	10,9%	10,4%	10,9%	10,6%	9,9%	10,2%	10,0%	9,6%	9,4%

Source: CARE Database / EC

Date of query: 19-oct-2006

<sup>1</sup> Data of the last available year were used when calculating EU-14 totals for IE (2003), LU (2002) and NL (2003).

**Table 19: Annual number of male fatalities by country, passengers (1995-2004)**

	1995	1996	1997	1998	1999	2000	2001	2002	2003	2004
BE	146	129	109	145	111	142	146	89	82	81
DK	60	56	42	46	47	62	44	50	33	28
EL	276	249	253	268	263	230	199	181	188	187
ES	777	740	717	732	733	757	727	722	730	583
FR	1.071	961	1.004	939	911	961	923	869	666	591
IE	46	60	57	59	51	59	62	39	40	-
IT	892	816	768	652	747	806	804	783	700	631
LU	5	9	6	5	5	8	4	11	-	-
NL	102	101	88	98	98	104	76	92	85	-
AT	125	100	102	95	120	103	92	76	96	75
PT	373	346	312	314	261	278	205	231	176	170
FI	45	48	45	50	40	31	41	52	31	52
SE	47	56	50	38	53	70	57	69	62	52
UK	394	406	383	359	361	368	399	386	406	389
EU-14	4.359	4.076	3.936	3.799	3.801	3.979	3.779	3.650	3.305 <sup>1</sup>	2.975 <sup>1</sup>
Yearly Change	-	-6,5%	-3,5%	-3,5%	0,1%	4,7%	-5,0%	-3,4%	-9,4%	-10,0%
Total - all users	36.642	34.868	34.763	34.552	34.151	33.486	32.882	31.758	29.244 <sup>1</sup>	26.919 <sup>1</sup>
% Male passengers	11,9%	11,7%	11,3%	11,0%	11,1%	11,9%	11,5%	11,5%	11,3%	11,1%

Source: CARE Database / EC

Date of query: 19-oct-2006

<sup>1</sup> Data of the last available year were used when calculating EU-14 totals for IE (2003), LU (2002) and NL (2003).

**Table 20: Annual number of female fatalities by country, pedestrians (1995-2004)**

	1995	1996	1997	1998	1999	2000	2001	2002	2003	2004
BE	58	59	54	76	68	65	68	59	58	39
DK	60	28	27	30	27	43	23	19	17	14
EL	176	157	146	168	159	134	143	102	89	127
ES	346	334	347	357	337	297	285	248	251	239
FR	443	391	387	395	369	284	293	347	256	227
IE	36	38	41	36	39	30	29	29	22	-
IT	420	428	369	320	340	366	337	430	247	219
LU	3	0	4	1	0	5	3	2	-	-
NL	52	50	56	51	31	34	37	41	39	-
AT	87	64	67	84	79	74	49	75	57	56
PT	224	211	195	143	135	111	121	108	96	89
FI	29	39	43	23	21	35	26	22	25	25
SE	31	36	29	23	39	36	29	26	23	26
UK	413	367	359	354	300	307	268	283	276	228
EU-14	2.378	2.201	2.123	2.061	1.943	1.821	1.711	1.791	1.458 <sup>1</sup>	1.352 <sup>1</sup>
Yearly Change	-	-7,4%	-3,6%	-2,9%	-5,7%	-6,3%	-6,0%	4,7%	-18,6%	-7,3%
Total - all users	36.642	34.868	34.763	34.552	34.151	33.486	32.882	31.758	29.244 <sup>1</sup>	26.919 <sup>1</sup>
% Female pedestrians	6,5%	6,3%	6,1%	6,0%	5,7%	5,4%	5,2%	5,6%	5,0%	5,0%

Source: CARE Database / EC

Date of query: 19-oct-2006

<sup>1</sup> Data of the last available year were used when calculating EU-14 totals for IE (2003), LU (2002) and NL (2003).**Table 21: Annual number of male fatalities by country, pedestrians (1995-2004)**

	1995	1996	1997	1998	1999	2000	2001	2002	2003	2004
BE	91	95	87	85	86	77	90	68	55	62
DK	58	40	60	43	55	56	26	44	32	29
EL	299	257	257	239	233	238	195	175	167	165
ES	625	594	602	612	542	559	532	497	499	416
FR	643	652	595	649	563	554	530	519	370	354
IE	75	76	87	77	52	54	60	55	40	-
IT	525	557	524	524	507	531	595	733	534	491
LU	5	9	4	2	2	6	8	4	-	-
NL	90	59	63	57	77	71	67	55	56	-
AT	113	93	89	81	103	66	68	85	75	76
PT	374	413	354	263	259	271	217	229	185	144
FI	43	31	26	39	46	27	36	18	34	24
SE	40	38	43	46	47	37	58	32	32	41
UK	672	672	651	592	608	582	590	525	526	466
EU-14	3.653	3.587	3.442	3.310	3.180	3.129	3.071	3.039	2.608 <sup>1</sup>	2.368 <sup>1</sup>
Yearly Change	-	-1,8%	-4,0%	-3,8%	-3,9%	-1,6%	-1,9%	-1,0%	-14,2%	-9,2%
Total - all users	36.642	34.868	34.763	34.552	34.151	33.486	32.882	31.758	29.244 <sup>1</sup>	26.919 <sup>1</sup>
% Male pedestrians	10,0%	10,3%	9,9%	9,6%	9,3%	9,3%	9,3%	9,6%	8,9%	8,8%

Source: CARE Database / EC

Date of query: 19-oct-2006

<sup>1</sup> Data of the last available year were used when calculating EU-14 totals for IE (2003), LU (2002) and NL (2003).

## 4 Fatalities 2004

### 4.1 People involved

#### 4.1.1 Age and gender of persons

**Table 22: Number of total fatalities by age group by country, 2004**

	0-9	10-15	16-17	18-20	21-24	25-29	30-39	40-49	50-59	60-64	65-74	75+	Total
BE	15	20	23	102	138	138	197	174	117	33	96	105	1.162
DK	8	14	8	32	35	32	56	54	34	16	34	46	369
EL	27	35	39	107	197	209	280	213	158	68	172	145	1.670
ES	70	92	134	339	454	579	899	632	482	195	394	352	4.741
FR	101	108	164	554	722	567	921	688	562	168	381	581	5.530
IE*	12	5	11	34	48	36	60	30	32	8	22	31	337
IT	52	107	149	331	552	614	1.005	645	521	242	511	654	5.625
LU**	2	1	3	6	4	6	19	11	5	0	3	2	62
NL*	33	38	47	85	94	89	157	117	99	48	82	139	1.028
AT	15	15	29	80	89	68	154	110	88	51	69	108	878
PT	33	22	32	71	143	154	223	172	133	64	144	87	1.294
FI	10	5	19	34	40	26	36	47	46	15	47	50	375
SE	9	15	9	42	36	39	60	60	45	26	48	91	480
UK	64	113	169	375	353	289	598	403	283	114	196	393	3.368
EU-14	452	589	835	2.192	2.904	2.845	4.665	3.356	2.606	1.048	2.198	2.784	26.919
% by age group	1,7%	2,2%	3,1%	8,1%	10,8%	10,6%	17,3%	12,5%	9,7%	3,9%	8,2%	10,3%	100,0%

Source: CARE Database / EC  
Date of query: 19-oct-2006  
\* Data 2003  
\*\* Data 2002

**Table 23: Number of female fatalities by age group by country, 2004**

	0-9	10-15	16-17	18-20	21-24	25-29	30-39	40-49	50-59	60-64	65-74	75+	Total
BE	7	4	6	12	21	27	42	29	26	9	32	34	250
DK	4	7	2	8	7	3	11	11	9	7	13	16	98
EL	15	10	7	24	23	25	52	42	34	28	45	50	364
ES	31	34	28	71	92	110	160	142	118	52	129	141	1.124
FR	48	33	31	124	112	94	141	161	153	62	155	236	1.349
IE*	5	2	6	7	7	3	8	4	9	3	8	16	79
IT	25	23	32	52	91	91	155	107	111	54	148	177	1.133
LU**	0	0	1	1	1	1	3	1	1	0	1	2	12
NL*	9	18	17	19	21	13	26	19	24	13	34	49	262
AT	7	7	8	20	17	13	25	21	17	9	25	45	215
PT	13	10	8	6	31	17	29	34	26	9	46	36	264
FI	4	1	6	10	9	12	4	14	12	4	22	20	118
SE	0	3	4	5	5	7	6	15	13	5	14	39	116
UK	23	32	44	82	57	58	95	74	77	39	84	163	829
EU-14	190	184	200	441	494	474	756	674	630	295	756	1.024	6.213
% by age group	3,1%	3,0%	3,2%	7,1%	7,9%	7,6%	12,2%	10,8%	10,1%	4,7%	12,2%	16,5%	100,0%

Source: CARE Database / EC  
Date of query: 19-oct-2006  
\* Data 2003  
\*\* Data 2002

**Table 24: Number of male fatalities by age group by country, 2004**

	0-9	10-15	16-17	18-20	21-24	25-29	30-39	40-49	50-59	60-64	65-74	75+	Total
BE	8	16	17	90	116	111	155	144	91	23	64	71	908
DK	4	7	6	24	28	29	45	43	25	9	21	30	271
EL	12	25	31	83	174	184	228	171	124	40	127	95	1.303
ES	39	57	106	268	362	468	739	490	364	142	264	211	3.551
FR	54	75	133	430	610	472	780	527	409	106	225	346	4.181
IE*	7	2	5	27	41	30	51	25	22	5	14	15	246
IT	27	84	117	279	461	523	850	538	410	188	363	477	4.492
LU**	2	1	2	5	3	5	16	10	4	0	2	0	50
NL*	24	20	30	66	72	74	131	98	72	35	48	88	758
AT	8	8	21	60	72	55	129	89	71	42	44	63	663
PT	21	11	24	64	112	137	195	138	107	55	98	50	1.028
FI	6	4	13	24	31	14	32	33	34	11	25	30	257
SE	9	12	5	37	31	32	54	45	32	21	34	52	364
UK	41	81	125	293	296	231	503	329	206	75	112	230	2.539
EU-14	262	404	635	1.750	2.409	2.366	3.908	2.680	1.972	752	1.441	1.758	20.612
% by age group	1,3%	2,0%	3,1%	8,5%	11,7%	11,5%	19,0%	13,0%	9,6%	3,6%	7,0%	8,5%	100,0%

Source: CARE Database / EC

Date of query: 19-oct-2006

\* Data 2003

\*\* Data 2002

**4.1.2 Age of persons by mode of transport****Table 25: Number of fatalities aged 0 to 15 by mode of transport (in which the fatality was travelling) by country, 2004**

	Mode of transport									Total
	Pedes- trian	Pedal Cycle	Motor- Moped	Motor- cycle	Car or Taxi	Lorry, under 3,5 Tonnes	Heavy Goods Vehicle	Bus or Coach	Agricultural Tractor	
BE	9	5	0	0	13	1	0	1	1	30
DK	4	8	2	0	7	1	0	0	0	22
EL	17	6	1	8	20	2	0	7	1	62
ES	41	7	21	1	89	0	0	0	0	159
FR	37	21	30	4	105	2	1	2	0	202
IE*	8	3	41	0	6	0	0	0	0	58
IT	23	13		12	66	1	0	1	0	116
LU**	1	0	0	0	2	0	0	0	0	3
NL*	17	25	3	0	20	3	0	0	3	71
AT	13	2	4	0	9	1	0	0	1	30
PT	25	1	2	2	16	3	0	0	0	49
FI	1	0	3	2	8	1	0	0	0	15
SE	4	1	5	0	13	0	0	0	1	24
UK	80	26	1	6	56	2	1	3	0	175
EU-14	280	118	113	35	430	17	2	14	7	1.016
% by vehicle group	27,6%	11,6%	11,1%	3,4%	42,3%	1,7%	0,2%	1,4%	0,7%	100,0%

Source: CARE Database / EC

Date of query: 05-dec-2006

\* Data 2003

\*\* Data 2002

**Table 26: Number of fatalities aged 16 to 24 by mode of transport (in which the fatality was travelling) by country, 2004**

	Pedes- trian	Pedal Cycle	Moped	Motor- cycle	Car or Taxi	Lorry, under 3,5 Tonnes	Heavy Goods Vehicle	Bus or Coach	Agricultural Tractor	Total
BE	4	6	10	18	185	4	2	0	0	229
DK	5	2	8	5	51	4	0	0	0	75
EL	12	2	14	120	179	11	2	0	1	341
ES	51	5	166	59	598	28	8	0	0	915
FR	45	13	177	225	958	6	7	1	1	1.433
IE*	5	1	122	14	59	10	1	0	0	212
IT	20	10	0	223	628	8	6	2	0	897
LU**	0	0	0	0	13	0	0	0	0	13
NL*	4	15	34	15	147	11	0	0	0	226
AT	10	3	15	17	147	4	1	1	0	198
PT	15	2	18	60	123	27	2	0	0	247
FI	4	1	3	7	70	1	0	7	0	93
SE	9	1	6	9	59	1	1	0	1	87
UK	91	19	16	113	630	16	3	5	2	895
<b>EU-14</b>	<b>275</b>	<b>80</b>	<b>589</b>	<b>885</b>	<b>3.847</b>	<b>131</b>	<b>33</b>	<b>16</b>	<b>5</b>	<b>5.861</b>
<b>% by vehicle group</b>	<b>4,7%</b>	<b>1,4%</b>	<b>10,0%</b>	<b>15,1%</b>	<b>65,6%</b>	<b>2,2%</b>	<b>0,6%</b>	<b>0,3%</b>	<b>0,1%</b>	<b>100,0%</b>

Source: CARE Database / EC

Date of query: 05-dec-2006

\* Data 2003

\*\* Data 2002

**Table 27: Number of fatalities aged 25 to 64 by mode of transport by country, 2004**

	Pedes- trian	Pedal Cycle	Moped	Motor- cycle	Car or Taxi	Lorry, under 3,5 Tonnes	Heavy Goods Vehicle	Bus or Coach	Agricultural Tractor	Total
BE	39	29	19	101	347	25	16	4	2	582
DK	18	27	27	17	95	5	3	0	0	192
EL	106	7	25	231	483	45	14	1	14	926
ES	268	39	119	332	1.615	226	130	1	17	2.747
FR	182	86	108	626	1.728	45	68	12	7	2.862
IE*	27	2	142	41	82	8	4	0		306
IT	259	124		777	1.492	41	43	13	12	2.761
LU**	2	1	0	0	35		3	0	0	41
NL*	37	64	30	80	248	40	7	0	2	508
AT	49	24	14	78	256	16	20	6	3	466
PT	89	23	70	117	320	65	18	3	21	726
FI	21	9	3	11	95	9	2	17	1	168
SE	19	8	5	44	138	4	4	1	2	225
UK	287	68	7	451	761	48	42	10	5	1.679
<b>EU-14</b>	<b>1.403</b>	<b>511</b>	<b>569</b>	<b>2.906</b>	<b>7.695</b>	<b>577</b>	<b>374</b>	<b>68</b>	<b>86</b>	<b>14.189</b>
<b>% by vehicle group</b>	<b>9,9%</b>	<b>3,6%</b>	<b>4,0%</b>	<b>20,5%</b>	<b>54,2%</b>	<b>4,1%</b>	<b>2,6%</b>	<b>0,5%</b>	<b>0,6%</b>	<b>100,0%</b>

Source: CARE Database / EC

Date of query: 05-dec-2006

\* Data 2003

\*\* Data 2002

**Table 28: Number of fatalities aged 65+ by mode of transport  
(in which the fatality was travelling) by country, 2004**

	Pedes- trian	Pedal Cycle	Moped	Motor- cycle	Car or Taxi	Lorry, under 3,5 tonnes	Heavy Goods Vehicle	Bus or Coach	Agricultural Tractor	Total
BE	49	39	3	0	78	2	0	0	0	171
DK	16	16	9	1	33	3	0	1	0	79
EL	143	9	15	16	93	16	3	0	20	315
ES	275	25	40	2	341	26	2	0	20	731
FR	298	47	15	9	564	5	4	5	4	951
IE*	22	4	69	0	21	1	3	0		120
IT	381	143		27	504	5	0	3	8	1.071
LU**	3	0	0	0	2		0	0	0	5
NL*	39	84	27	0	68	1	1	0	0	220
AT	59	29	11	3	67	1	0	2	3	175
PT	88	13	25	1	70	5	3	0	11	216
FI	23	16	5	2	48	3	0	0	0	97
SE	35	17	2	3	78	0		3	1	139
UK	231	23	1	7	304	0	1	10	0	577
EU-14	1.662	465	222	71	2.271	68	17	24	67	4.867
% by vehicle group	34,1%	9,6%	4,6%	1,5%	46,7%	1,4%	0,3%	0,5%	1,4%	100,0%

Source: CARE Database / EC

Date of query: 05-dec-2006

\* Data 2003

\*\* Data 2002



## 4.2 Modes of transport

### 4.2.1 Mode of transport by age of persons

Figure 20: Fatalities by age group and mode of transport (EU-14), 2004\*

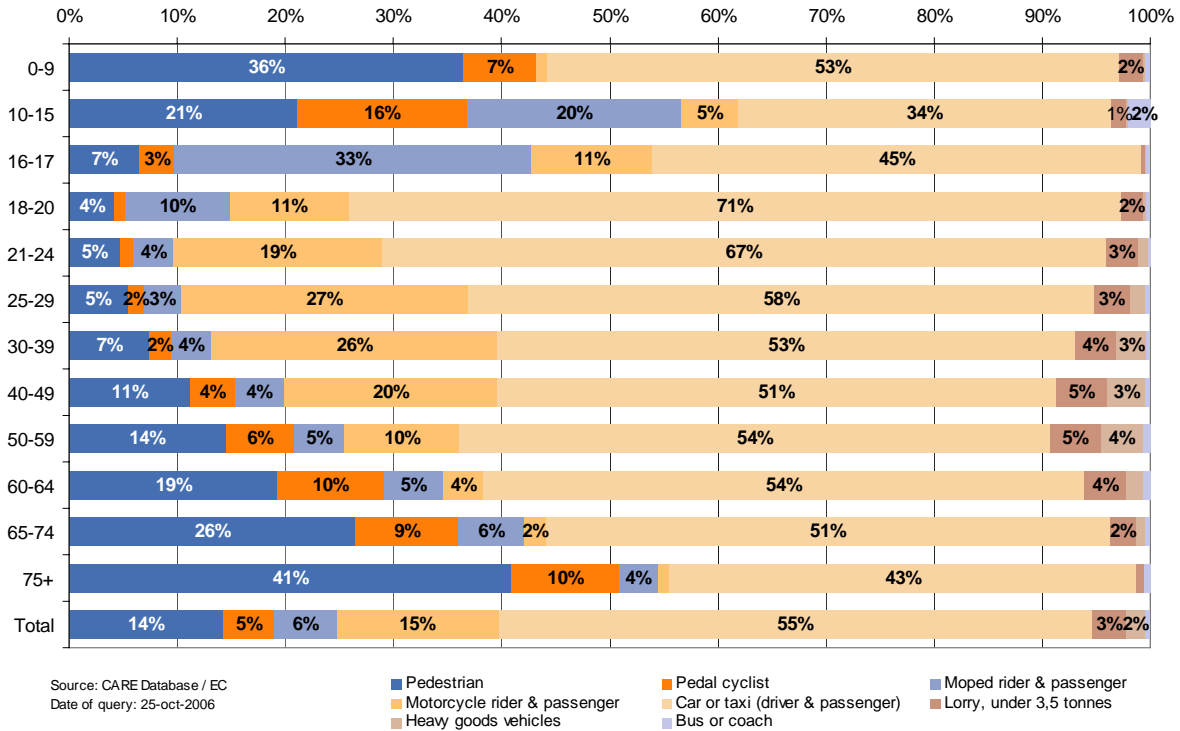


Table 29: Number of pedestrian fatalities by age group by country, 2004

	0-9	10-15	16-17	18-20	21-24	25-29	30-39	40-49	50-59	60-64	65-74	75+	Total
BE	6	3	1	2	1	7	9	6	12	5	23	26	101
DK	2	2	0	1	4	2	5	8	1	2	5	11	43
EL	12	5	1	3	8	6	22	32	24	22	56	87	293
ES	26	15	8	14	29	32	66	62	76	34	97	179	683
FR	23	16	12	19	17	21	44	66	48	13	81	219	581
IE*	6	2	0	2	3	3	7	3	11	3	8	14	64
IT	15	8	2	6	12	29	59	63	72	36	122	259	710
LU**	1	0	0	0	0	0	0	2	0	0	2	1	6
NL*	11	6	1	2	1	3	8	11	10	5	11	28	97
AT	7	6	2	3	5	2	11	16	11	9	18	41	132
PT	19	8	1	3	11	7	25	24	21	17	51	39	233
FI	1	0	3	0	1	1	5	3	8	4	10	13	49
SE	1	3	1	6	2	3	5	2	5	4	11	24	67
UK	32	48	22	28	41	36	73	70	68	40	64	167	694
EU-14	163	122	54	90	135	152	339	368	367	194	560	1.108	3.753
% by age group	4,3%	3,2%	1,4%	2,4%	3,6%	4,0%	9,0%	9,8%	9,8%	5,2%	14,9%	29,5%	100,0%

Source: CARE Database / EC  
Date of query: 19-oct-2006  
\* Data 2003  
\*\* Data 2002

\* IE & NL: 2003, LU: 2002

**Table 30: Number of pedal cyclist fatalities by age group by country, 2004**

	0-9	10-15	16-17	18-20	21-24	25-29	30-39	40-49	50-59	60-64	65-74	75+	Total
BE	1	4	3	2	1	1	3	7	12	6	12	27	79
DK	2	6	1	0	1	2	7	6	6	6	4	12	53
EL	3	3	1	1	0	0	2	3	1	1	4	5	24
ES	0	8	2	1	4	6	11	13	10	5	19	8	88
FR	7	15	4	2	7	5	8	30	33	15	25	24	177
IE*	1	2	0	0	1	1	0	0	1	0	3	1	10
IT	2	11	4	2	4	11	25	26	37	25	56	87	296
LU**	0	0	0	0	0	0	0	0	1	0	0	0	1
NL*	6	19	6	5	4	4	10	10	23	17	33	51	188
AT	0	2	0	1	2	0	4	5	7	8	14	15	58
PT	1	0	1	1	0	3	6	8	6	3	8	7	47
FI	0	0	1	0	0	1	2	2	2	2	6	10	26
SE	1	0	0	1	0	0	0	4	2	2	6	11	27
UK	5	21	3	7	9	10	13	19	17	9	12	11	136
EU-14	30	91	26	23	34	45	91	133	158	99	202	269	1.209
% by age group	2,5%	7,5%	2,1%	1,9%	2,8%	3,7%	7,5%	11,0%	13,0%	8,2%	16,7%	22,2%	100,0%

Source: CARE Database / EC

Date of query: 19-oct-2006

\* Data 2003

\*\* Data 2002

**Table 31: Number of moped and motorcycle rider fatalities by age group by country, 2004**

	0-9	10-15	16-17	18-20	21-24	25-29	30-39	40-49	50-59	60-64	65-74	75+	Total
BE	0	0	3	9	13	27	36	40	10	3	3	0	146
DK	0	1	3	2	8	7	11	16	9	0	4	6	67
EL	0	7	18	29	62	84	82	38	24	7	21	6	380
ES	0	16	62	68	58	120	173	81	33	18	32	14	682
FR	0	25	71	128	156	153	284	172	93	10	14	12	1.121
IE*	0	0	1	4	7	13	16	9	2	0	0	0	52
IT	0	35	77	74	153	217	356	181	96	18	41	50	1.324
LU**	0	0	0	0	0	0	0	0	0	0	0	0	0
NL*	0	1	23	7	15	25	41	21	14	6	5	22	180
AT	0	4	12	2	15	15	31	15	20	7	9	5	135
PT	0	3	11	18	38	47	66	41	19	10	21	3	279
FI	0	4	2	0	7	1	4	3	3	2	4	3	33
SE	0	3	4	5	4	8	13	14	8	2	5	0	66
UK	0	2	26	38	55	61	217	121	39	7	8	0	579
EU-14	0	101	314	384	591	778	1.330	752	370	89	166	121	5.044
% by age group	0,0%	2,0%	6,2%	7,6%	11,7%	15,4%	26,4%	14,9%	7,3%	1,8%	3,3%	2,4%	100,0%

Source: CARE Database / EC

Date of query: 05-dec-2006

\* Data 2003

\*\* Data 2002

**Table 32: Number of moped and motorcycle passenger fatalities by age group by country, 2004**

	0-9	10-15	16-17	18-20	21-24	25-29	30-39	40-49	50-59	60-64	65-74	75+	Total
BE	0	0	1	1	1	2	2	0	0	0	0	0	7
DK	0	1	0	0	0	0	0	0	1	0	0	0	2
EL	0	2	0	15	10	10	5	4	2	0	3	1	54
ES	0	7	13	14	11	16	9	4	3	1	0	0	78
FR	2	7	14	18	15	8	8	8	2	0	0	0	84
IE*	0	0	0	1	1	0	1	0	0	0	0	0	3
IT	1	17	12	9	20	18	20	10	3	0	3	2	134
LU**	0	0	0	0	0	0	0	0	0	0	0	0	0
NL*	0	2	1	1	2	1	0	0	2	0	0	0	9
AT	0	0	2	0	1	0	0	4	0	0	0	0	7
PT	0	1	5	1	5	5	2	1	0	0	1	2	23
FI	0	1	1	0	0	0	0	0	1	0	0	0	3
SE	0	2	2	0	0	1	1	2	0	0	0	0	8
UK	2	3	0	7	3	0	8	3	1	1	0	0	28
EU-14	5	43	50	67	68	61	56	36	15	2	7	5	440
% by age group	1,2%	9,9%	11,4%	15,2%	15,5%	13,8%	12,8%	8,2%	3,5%	0,5%	1,6%	1,2%	100,0%

Source: CARE Database / EC  
Date of query: 05-dec-2006  
\* Data 2003  
\*\* Data 2002

**Table 33: Number of car or taxi driver fatalities by age group by country, 2004**

	0-9	10-15	16-17	18-20	21-24	25-29	30-39	40-49	50-59	60-64	65-74	75+	Total
BE	0	0	1	56	83	61	96	75	44	11	39	25	491
DK	0	0	1	17	16	15	22	20	14	6	13	11	135
EL	0	2	2	22	77	75	101	96	57	16	37	21	506
ES	0	1	3	111	210	253	389	277	187	70	112	60	1.688
FR	0	2	4	233	382	280	462	302	289	87	167	231	2.445
IE*	0	0	0	11	20	15	20	13	11	3	4	10	110
IT	0	0	1	118	221	234	374	230	201	105	184	162	1.867
LU**	0	0	0	2	3	4	16	8	3	0	1	1	38
NL*	0	0	1	41	50	41	70	51	33	14	21	23	345
AT	0	0	4	55	51	37	80	47	30	16	20	28	368
PT	0	0	2	21	40	50	75	42	38	13	29	8	319
FI	0	0	1	23	20	12	18	26	14	6	14	17	151
SE	0	2	0	19	21	14	33	30	21	11	18	32	201
UK	0	1	41	151	159	113	207	139	104	37	82	126	1.164
EU-14	0	8	62	879	1.353	1.204	1.963	1.356	1.046	394	741	755	9.829
% by age group	0,0%	0,1%	0,6%	8,9%	13,8%	12,3%	20,0%	13,8%	10,6%	4,0%	7,5%	7,7%	100,0%

Source: CARE Database / EC  
Date of query: 05-dec-2006  
\* Data 2003  
\*\* Data 2002

**Table 34: Number of car or taxi passenger fatalities by age group by country, 2004**

	0-9	10-15	16-17	18-20	21-24	25-29	30-39	40-49	50-59	60-64	65-74	75+	Total
BE	6	7	9	19	17	19	17	9	11	4	6	8	132
DK	4	3	3	10	4	5	7	2	2	2	5	4	51
EL	12	6	16	28	34	26	47	26	27	12	25	10	269
ES	43	44	44	118	111	102	122	86	89	40	93	76	1.003
FR	66	40	56	149	135	81	76	57	57	39	72	94	924
IE*	5	1	8	11	9	3	10	1	5	1	3	4	64
IT	34	32	51	119	118	83	104	65	61	35	81	77	957
LU**	1	1	3	4	1	2	1	1	0	0	0	0	14
NL*	12	8	14	24	17	9	12	8	6	3	11	13	137
AT	7	2	8	18	11	6	10	11	13	6	5	14	112
PT	9	9	11	19	29	14	27	31	23	6	19	16	218
FI	8	0	9	7	10	2	3	5	9	0	10	7	70
SE	7	4	2	9	8	10	4	6	6	3	8	20	87
UK	22	33	77	135	67	57	47	20	25	12	25	71	593
EU-14	236	190	312	671	570	419	487	327	334	163	363	414	4.630
% by age group	5,1%	4,1%	6,7%	14,5%	12,3%	9,0%	10,5%	7,1%	7,2%	3,5%	7,8%	8,9%	100,0%

Source: CARE Database / EC  
Date of query: 05-dec-2006  
\* Data 2003  
\*\* Data 2002

**Table 35: Number of fatalities in heavy goods vehicles and lorries <3,5t by age group by country, 2004**

	0-9	10-15	16-17	18-20	21-24	25-29	30-39	40-49	50-59	60-64	65-74	75+	Total
BE	0	1	0	0	6	5	8	15	13	0	2	0	50
DK	0	1	0	2	2	1	4	2	1	0	3	0	16
EL	0	2	0	8	5	7	20	12	15	5	11	8	93
ES	0	0	0	12	26	46	124	101	72	24	25	5	442
FR	3	0	1	4	8	15	30	41	31	3	10	0	146
IE*	0	0	1	4	6	1	6	4	1	0	3	1	27
IT	0	1	1	0	13	5	31	25	19	4	4	1	109
LU**	0	0	0	0	0	0	2	0	1	0	0	0	3
NL*	2	1	1	5	5	6	13	14	11	3	1	1	63
AT	1	0	0	1	4	8	14	11	3	0	0	1	43
PT	3	0	0	7	21	29	18	18	18	6	7	2	130
FI	1	0	0	0	1	0	0	4	6	1	3	0	16
SE	0	0	0	1	1	1	2	1	1	3	0	0	10
UK	0	3	0	7	12	11	29	21	23	6	1	0	114
EU-14	11	9	4	51	110	134	301	269	215	55	69	20	1.262
% by age group	0,9%	0,8%	0,3%	4,1%	8,7%	10,6%	23,9%	21,3%	17,0%	4,3%	5,5%	1,6%	100,0%

Source: CARE Database / EC  
Date of query: 05-dec-2006  
\* Data 2003  
\*\* Data 2002



**Table 36: Number of fatalities in buses or coaches by age group by country, 2004**

	0-9	10-15	16-17	18-20	21-24	25-29	30-39	40-49	50-59	60-64	65-74	75+	Total
BE	1	0	0	0	0	0	0	1	2	1	0	0	5
DK	0	0	0	0	0	0	0	0	0	0	0	1	1
EL	0	7	0	0	0	0	0	0	1	0	0	0	8
ES	0	0	0	0	0	1	0	0	0	0	0	0	5
FR	0	2	0	1	0	0	3	2	6	1	5	0	21
IE*	0	0	0	0	0	0	0	0	0	0	0	0	0
IT	0	1	0	1	1	1	3	5	3	1	3	0	24
LU**	0	0	0	0	0	0	0	0	0	0	0	0	0
NL*	0	0	0	0	0	0	0	0	0	0	0	0	0
AT	0	0	1	0	0	0	3	0	0	3	0	2	9
PT	0	0	0	0	0	0	1	0	2	0	0	0	3
FI	0	0	2	4	1	9	3	3	2	0	0	0	24
SE	0	0	0	0	0	0	0	0	1	0	0	3	4
UK	1	2	0	2	3	1	2	5	1	1	1	9	28
EU-14	2	12	3	8	5	12	16	16	19	7	10	15	133
% by age group	1,6%	9,2%	2,3%	6,2%	3,8%	9,2%	11,8%	12,3%	14,2%	5,4%	7,2%	11,4%	100,0%

Source: CARE Database / EC  
Date of query: 05-dec-2006  
\* Data 2003  
\*\* Data 2002

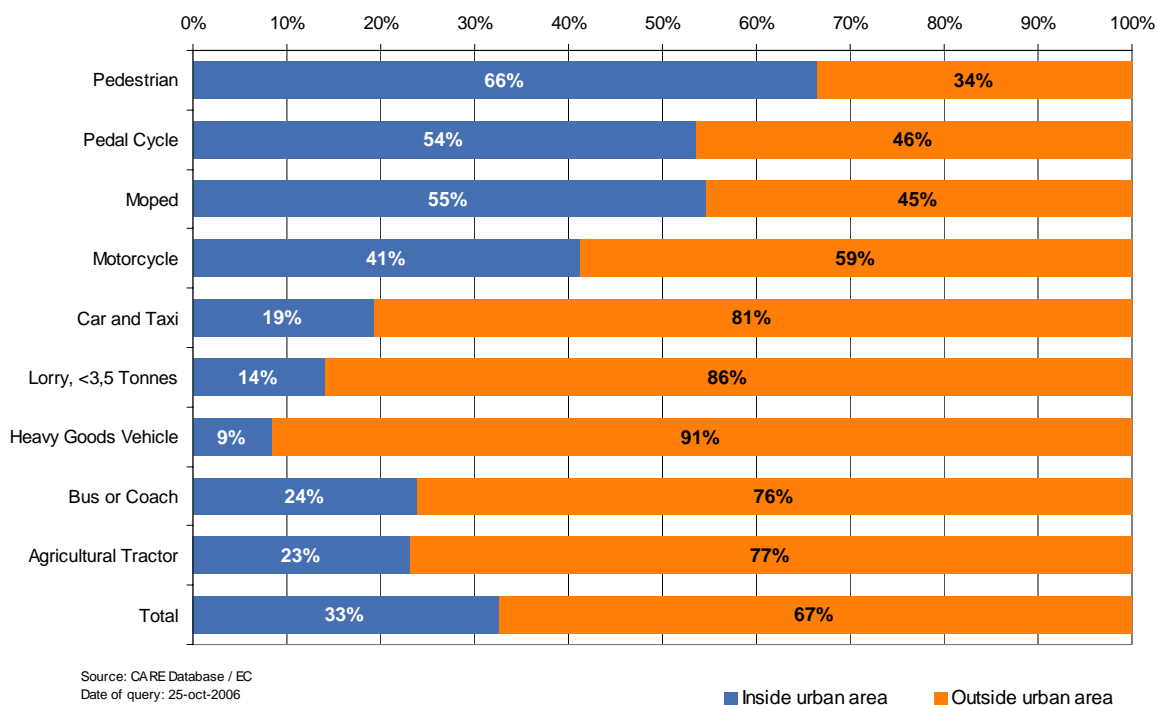
**Table 37: Number of fatalities by person class and age group by country, 2004**

	Driver				Passenger				Pedestrian			
	0 to 15	16 to 24	25 to 64	65+	0 to 15	16 to 24	25 to 64	65+	0 to 15	16 to 24	25 to 64	65+
BE	13	204	548	137	13	55	72	15	9	4	39	49
DK	9	52	154	54	9	18	20	10	4	5	18	16
EL	16	220	651	128	29	111	171	46	17	12	106	143
ES	25	546	1.969	287	97	330	547	179	41	51	268	275
FR	48	999	2.349	484	119	394	365	173	37	45	182	298
IE*	3	51	117	24	6	37	22	7	8	5	27	22
IT	48	671	2.337	606	88	341	431	178	23	20	259	381
LU**	0	5	34	2	2	8	5	0	1	0	2	3
NL*	26	160	423	158	28	62	49	24	17	4	37	39
AT	7	144	359	96	10	44	63	22	13	10	49	59
PT	4	149	519	94	22	82	132	40	25	15	89	88
FI	4	54	110	57	10	35	39	17	1	4	21	23
SE	6	57	176	73	14	21	35	31	4	9	19	35
UK	31	502	1.208	250	66	304	192	108	80	91	287	231
EU-14	240	3.814	10.954	2.450	513	1.842	2.143	850	280	275	1.403	1.662
% by age group	1,4%	21,8%	62,7%	14,0%	9,6%	34,4%	40,1%	15,9%	7,7%	7,6%	38,8%	45,9%

Source: CARE Database / EC  
Date of query: 05-dec-2006  
\* Data 2003  
\*\* Data 2002

## 4.2.2 Mode of transport by type of area

Figure 21: Fatalities by type of area and mode of transport (EU-14), 2004\*



\* IE & NL: 2003, LU: 2002

**Table 38: Number of fatalities by mode of transport (in which the fatality was travelling) and type of area by country, 2004**

	Pedestrian		Pedal Cycle		Moped		Motorcycle		Car or Taxi	
	inside urban area	outside urban area	inside urban area	outside urban area	inside urban area	outside urban area	inside urban area	outside urban area	inside urban area	outside urban area
BE	63	38	33	46	16	17	38	82	121	502
DK	24	19	30	23	28	18	7	16	30	156
EL	205	88	10	14	36	19	261	118	217	558
ES	343	340	20	68	175	185	95	304	226	2.465
FR	389	192	86	91	168	171	327	539	536	2.833
IE* <sup>2</sup>	39	25	0	10	0	0	17	38	28	146
IT <sup>1</sup>	539	171	184	112	241	147	500	570	785	2.039
LU** <sup>1</sup>	5	1	0	1	0	0	0	0	15	25
NL*	64	33	114	74	55	39	22	73	78	405
AT	92	40	29	29	19	25	17	81	68	412
PT	153	80	24	23	73	48	96	86	164	373
FI	27	22	14	12	6	8	7	15	28	193
SE	38	27	17	9	7	11	19	36	41	241
UK <sup>2</sup>	512	182	87	49	17	9	223	358	459	1.298
EU-14	2.493	1.258	648	560	841	697	1.629	2.316	2.796	11.646
% by area	66,5%	33,5%	53,6%	46,4%	54,7%	45,3%	41,3%	58,7%	19,4%	80,6%

	Lorry, under 3.5 Tonnes		Heavy Goods Vehicle		Bus or Coach		Agricultural Tractor		Total
	inside urban area	outside urban area	inside urban area	outside urban area	inside urban area	outside urban area	inside urban area	outside urban area	
BE	3	29	0	18	1	4	1	2	1.162
DK	1	12	0	3	0	1	0	0	369
EL	21	53	6	13	0	8	9	28	1.670
ES	24	268	4	146	1	4	8	32	4.741
FR	8	53	8	76	0	21	3	10	5.530
IE* <sup>2</sup>	2	17	0	8	0	0	0	0	337
IT <sup>1</sup>	6	52	4	47	9	15	4	19	5.625
LU** <sup>1</sup>	0	0	0	3	0	0	0	0	62
NL*	9	46	1	7	0	0	2	3	1.028
AT	2	20	1	20	1	8	0	7	878
PT	27	75	6	22	0	3	13	23	1.294
FI	0	14	0	2	0	24	0	1	375
SE	0	5	1	4	1	0	0	5	480
UK <sup>2</sup>	11	56	7	40	18	10	1	6	3.368
EU-14	115	700	38	409	31	99	41	136	26.919
% by area	14,1%	85,9%	8,6%	91,4%	23,8%	76,2%	23,2%	76,8%	100,0%

Source: CARE Database / EC

Date of query: 30-oct-2006

\* Data 2003

\*\* Data 2002

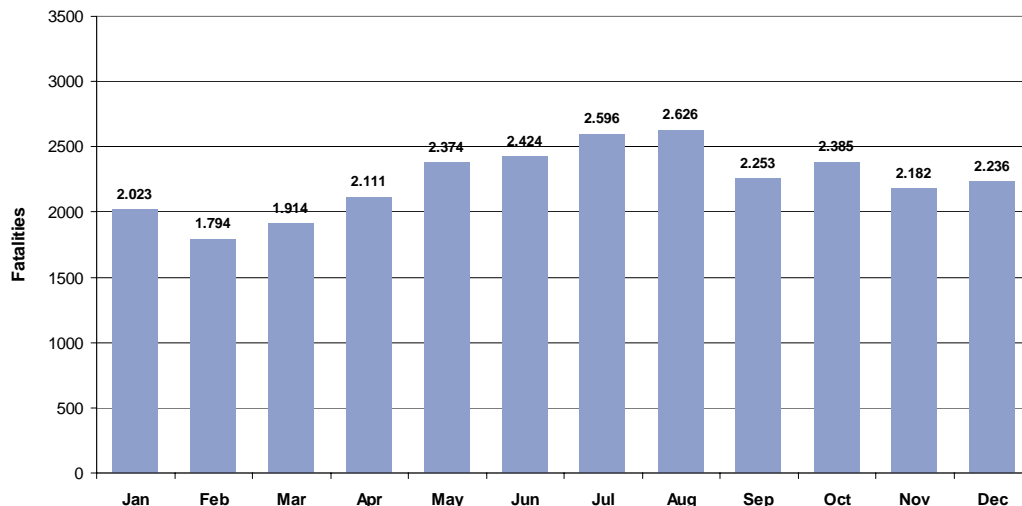
<sup>1</sup> Heavy goods vehicles include lorries < 3,5t

<sup>2</sup> Motorcycles including mopeds

## 4.3 Accident characteristics

### 4.3.1 Various periods of time (month, day of week, hour of day)

Figure 22: Number of fatalities by month (EU-14), 2004\*



Source: CARE database / EC  
Date of query: 19-oct-2006

Table 39: Number of fatalities by month by country, 2004

	Jan	Feb	Mar	Apr	May	Jun	Jul	Aug	Sep	Oct	Nov	Dec	Total
BE	104	80	97	90	99	103	111	109	88	97	87	97	1,162
DK	29	30	24	26	35	30	35	30	26	25	43	36	369
EL	111	114	122	137	144	149	172	169	164	137	114	137	1,670
ES	373	335	361	388	401	427	460	460	363	454	345	374	4,741
FR	427	350	369	389	495	466	559	533	521	534	424	464	5,531
IE*	20	21	33	23	38	39	32	26	20	34	30	21	337
IT	399	348	382	444	528	533	595	542	452	447	496	459	5,625
LU**	2	6	1	3	3	7	6	7	6	7	9	5	62
NL*	95	66	93	80	76	105	97	100	82	78	87	69	1,028
AT	53	41	48	76	65	94	76	123	73	82	79	68	878
PT	108	103	84	98	104	97	132	145	97	128	106	92	1,294
FI	25	19	40	38	42	28	26	25	40	38	28	26	375
SE	25	29	26	36	37	64	45	57	39	47	29	46	480
UK	252	253	234	283	308	282	250	301	282	277	305	341	3,368
EU-14	2,023	1,795	1,914	2,111	2,375	2,424	2,596	2,627	2,253	2,385	2,182	2,235	26,920
% by month	7,5%	6,7%	7,1%	7,8%	8,8%	9,0%	9,6%	9,8%	8,4%	8,9%	8,1%	8,3%	100,0%

Source: CARE Database / EC

Date of query: 05-dec-2006

\* Data 2003

\*\* Data 2002

\* IE & NL: 2003, LU: 2002



Figure 23: Total number of fatalities by day of week and person class (EU-14), 2004\*

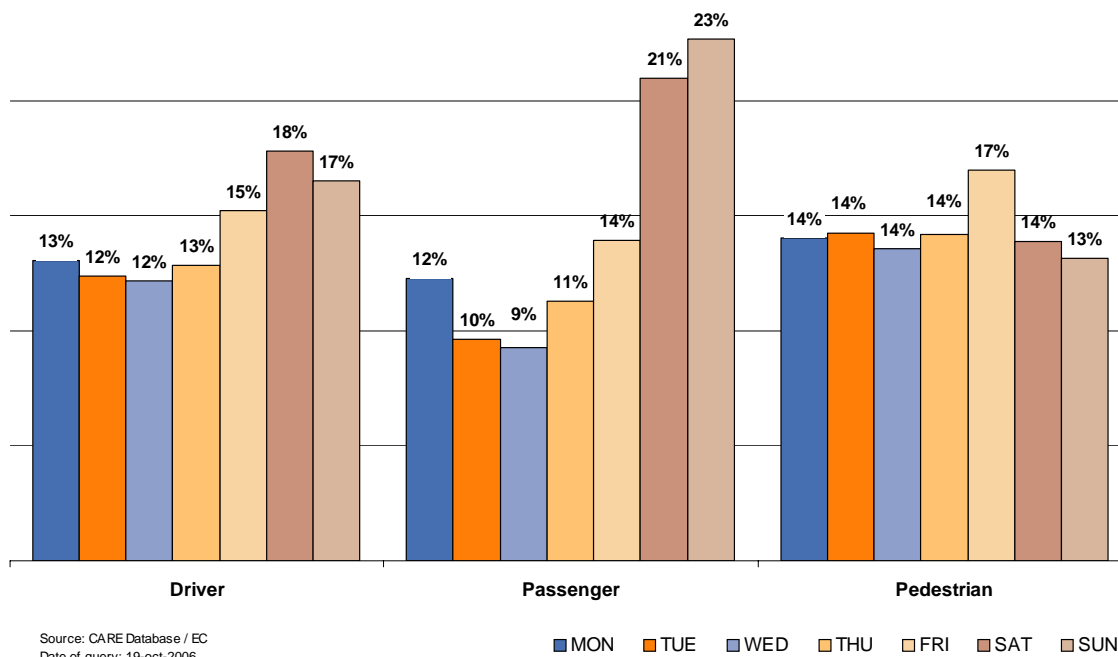


Table 40: Total number of fatalities by day of week by country, 2004

	Mon	Tue	Wed	Thu	Fri	Sat	Sun	Total
BE	158	135	138	143	161	221	206	1.162
DK	49	47	46	58	44	72	53	369
EL	238	190	196	188	253	286	319	1.670
ES	630	580	550	600	752	798	832	4.742
FR	689	650	686	710	847	1.040	906	5.528
IE*	50	30	30	44	54	59	70	337
IT	680	663	634	721	781	1.039	1.107	5.625
LU**	9	5	9	7	11	16	5	62
NL*	151	121	129	134	171	175	147	1.028
AT	100	124	119	136	136	141	122	878
PT	178	168	140	138	184	230	255	1.293
FI	66	42	43	48	86	55	35	375
SE	68	57	58	77	72	74	74	480
UK	438	432	390	419	540	615	534	3.368
EU-14	3.504	3.244	3.168	3.423	4.092	4.821	4.665	26.917
% by day	13,0%	12,1%	11,8%	12,7%	15,2%	17,9%	17,3%	100,0%

Source: CARE Database / EC

Date of query: 05-dec-2006

\* Data 2003

\*\* Data 2002

\* IE & NL: 2003, LU: 2002

**Table 41: Number of fatalities by day of week by country, 2004 (drivers)**

	Mon	Tue	Wed	Thu	Fri	Sat	Sun	Total
BE	123	109	103	120	131	168	152	906
DK	37	35	32	47	29	47	42	269
EL	133	112	123	114	157	183	195	1.017
ES	368	343	353	365	464	502	467	2.861
FR	496	484	498	497	600	694	623	3.891
IE*	29	20	18	29	25	38	39	199
IT	444	471	432	478	543	696	675	3.740
LU**	6	4	7	5	7	8	4	41
NL*	115	93	98	96	133	131	101	767
AT	65	78	87	93	100	102	81	606
PT	103	113	76	81	108	149	141	771
FI	42	32	26	34	34	32	25	225
SE	50	30	39	55	43	47	48	312
UK	282	250	252	251	307	341	318	2.001
EU-14	2.293	2.174	2.144	2.265	2.681	3.138	2.911	17.606
% by day	13,0%	12,3%	12,2%	12,9%	15,2%	17,8%	16,5%	100,0%

Source: CARE Database / EC

Date of query: 05-dec-2006

\* Data 2003

\*\* Data 2002

**Table 42: Number of fatalities by day of week by country 2004 (passengers)**

	Mon	Tue	Wed	Thu	Fri	Sat	Sun	Total
BE	20	8	15	9	24	41	38	155
DK	5	6	9	6	7	18	6	57
EL	64	28	37	43	44	62	82	360
ES	164	128	108	131	163	218	285	1.197
FR	118	79	106	112	151	265	225	1.056
IE*	10	7	5	9	12	15	17	75
IT	127	96	95	145	135	240	326	1.164
LU**	1	0	2	1	3	8	0	15
NL*	26	15	12	27	20	29	34	163
AT	16	29	9	17	16	24	29	140
PT	42	29	33	32	36	54	64	290
FI	16	5	12	8	35	19	6	101
SE	8	16	14	10	19	16	18	101
UK	64	87	57	76	108	153	128	673
EU-14	681	533	514	626	773	1.162	1.258	5.547
% by day	12,3%	9,6%	9,3%	11,3%	13,9%	20,9%	22,7%	100,0%

Source: CARE Database / EC

Date of query: 05-dec-2006

\* Data 2003

\*\* Data 2002

**Table 43: Number of fatalities by day of week by country, 2004 (pedestrians)**

	Mon	Tue	Wed	Thu	Fri	Sat	Sun	Total
BE	15	18	20	14	6	12	16	101
DK	7	6	5	5	8	7	5	43
EL	41	50	36	31	52	41	42	293
ES	98	109	89	104	125	78	80	683
FR	75	87	82	101	96	81	58	580
IE*	11	3	7	6	17	6	14	64
IT	105	94	106	97	102	102	104	710
LU**	2	1	0	1	1	0	1	6
NL*	10	13	19	11	18	15	11	97
AT	19	17	23	26	20	15	12	132
PT	33	26	31	25	40	27	50	232
FI	8	5	5	6	17	4	4	49
SE	10	11	5	12	10	11	8	67
UK	92	95	81	92	125	121	88	694
EU-14	526	535	509	531	637	520	493	3.751
% by day	14,0%	14,3%	13,6%	14,2%	17,0%	13,9%	13,1%	100,0%

Source: CARE Database / EC

Date of query: 05-dec-2006

\* Data 2003

\*\* Data 2002

**Table 44: Number of fatalities by hour of day by country, 2004**

	0	1	2	3	4	5	6	7	8	9	10	11	12
BE	38	49	44	39	49	47	47	49	47	40	40	38	39
DK	18	10	5	11	7	6	13	10	9	11	14	26	17
EL	55	51	58	61	61	81	65	68	55	58	59	61	72
ES	109	128	102	116	127	138	189	241	236	172	167	202	208
FR	170	131	137	118	162	178	177	238	255	215	194	226	248
IE*	21	19	10	16	13	5	6	14	8	6	9	14	22
IT	137	255	185	204	158	161	186	167	222	196	225	254	226
LU**	5	2	3	3	4	0	3	2	3	1	1	0	1
NL*	25	25	19	19	15	27	29	52	41	33	56	50	44
AT	23	23	20	27	33	32	46	40	25	24	31	40	36
PT	42	44	36	39	29	29	52	58	58	43	49	35	48
FI	20	20	14	10	12	9	10	16	7	16	16	30	31
SE	11	8	31	9	12	10	12	15	9	15	17	11	25
UK	121	127	100	87	70	68	89	113	126	100	112	129	161
EU-14	795	892	764	759	752	791	924	1.083	1.101	930	990	1.116	1.178
% by hour	3,0%	3,3%	2,8%	2,8%	2,8%	2,9%	3,4%	4,0%	4,1%	3,5%	3,7%	4,1%	4,4%

	13	14	15	16	17	18	19	20	21	22	23	Total
BE	38	57	62	58	81	62	54	41	42	58	40	1.162
DK	10	24	23	28	22	20	29	10	16	17	13	369
EL	61	70	85	81	89	84	77	80	79	83	76	1.670
ES	224	258	202	230	261	285	289	291	215	185	168	4.743
FR	185	284	297	334	381	372	310	272	246	197	204	5.531
IE*	7	10	7	22	25	12	20	24	13	16	11	337
IT	213	215	300	319	369	371	326	274	216	195	207	5.625
LU**	3	4	6	2	4	3	3	2	2	3	2	62
NL*	45	66	84	66	86	61	38	38	35	42	32	1.028
AT	41	51	55	70	44	59	37	33	22	29	37	878
PT	56	63	60	63	68	92	90	86	56	49	48	1.293
FI	29	42	26	21	27	25	21	19	18	21	20	480
SE	21	15	27	22	19	20	16	11	15	17	7	375
UK	140	158	190	224	225	184	177	177	165	146	179	3.368
EU-14	1.073	1.317	1.424	1.540	1.701	1.650	1.487	1.358	1.140	1.058	1.044	26.921
% by hour	4,0%	4,9%	5,3%	5,7%	6,3%	6,1%	5,5%	5,0%	4,2%	3,9%	3,9%	100,0%

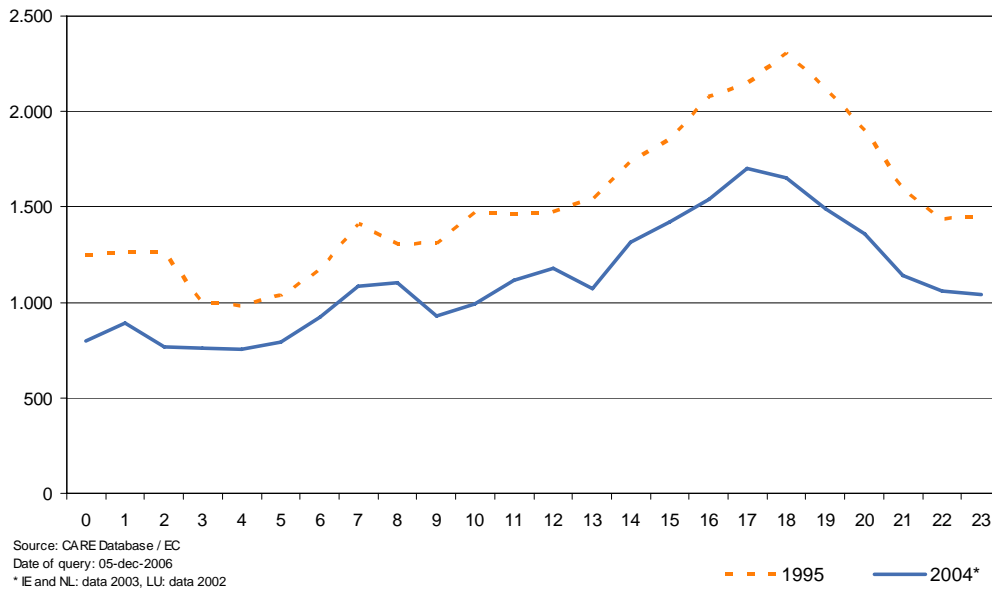
Source: CARE Database / EC

Date of query: 05-dec-2006

\* Data 2003

\*\* Data 2002

Figure 24: Number of fatalities by hour of day (EU-14), 1995 and 2004



**Table 45: Number of pedestrian fatalities by hour of day by country, 2004**

	0	1	2	3	4	5	6	7	8	9	10	11	12
BE	1	2	3	1	0	2	2	5	4	5	7	2	2
DK	2	2	0	1	0	0	0	3	0	4	2	6	2
EL	9	4	7	3	4	5	11	12	8	13	13	16	13
ES	13	10	11	8	11	18	22	31	25	30	26	37	36
FR	14	8	8	10	17	13	7	31	31	26	26	37	21
IE*	2	7	3	2	1	0	2	3	0	3	4	2	6
IT	13	18	13	11	7	9	9	24	36	35	37	42	29
LU**	0	0		0	1	0	0	0	1	0	0	0	0
NL*	4	1	2	0	0	3	0	2	3	3	8	4	7
AT	3	3	2	3	3	3	6	6	6	4	4	4	4
PT	10	6	1	6	5	3	9	11	8	9	9	5	5
FI	1	1	1	1	0	1	0	2	1	4	0	3	5
SE	3	1	3	1	1	1	0	3	0	3	6	2	1
UK	26	28	23	20	5	3	5	7	24	26	33	29	32
EU-14	101	91	77	67	55	61	73	140	147	165	175	189	163
% by hour	2,7%	2,4%	2,1%	1,8%	1,5%	1,6%	1,9%	3,7%	3,9%	4,4%	4,7%	5,0%	4,3%

	13	14	15	16	17	18	19	20	21	22	23	Total
BE	6	5	6	7	10	11	7	3	2	3	5	101
DK	0	2	1	3	3	3	1	1	4	3	0	43
EL	12	12	12	9	11	16	24	18	22	22	17	293
ES	32	28	26	23	27	40	55	64	40	36	33	682
FR	15	21	29	45	51	47	37	32	26	19	11	582
IE*	2	2	2	4	6	1	2	4	4	0	1	64
IT	15	17	24	34	46	76	72	57	30	30	22	710
LU**	1	0	2	0	0	0	1	0	0	0	0	6
NL*	3	5	6	4	15	7	4	6	3	6	1	97
AT	4	5	6	14	6	13	8	7	6	5	7	132
PT	13	10	7	8	16	26	13	22	17	9	6	234
FI	3	3	1	5	2	3	4	3	2	1	2	49
SE	7	3	5	5	6	6	1	1	2	4	2	67
UK	26	34	34	49	55	42	42	39	39	35	38	694
EU-14	139	147	161	210	254	291	271	257	197	173	145	3.754
% by hour	3,7%	3,9%	4,3%	5,6%	6,8%	7,8%	7,2%	6,8%	5,2%	4,6%	3,9%	100,0%

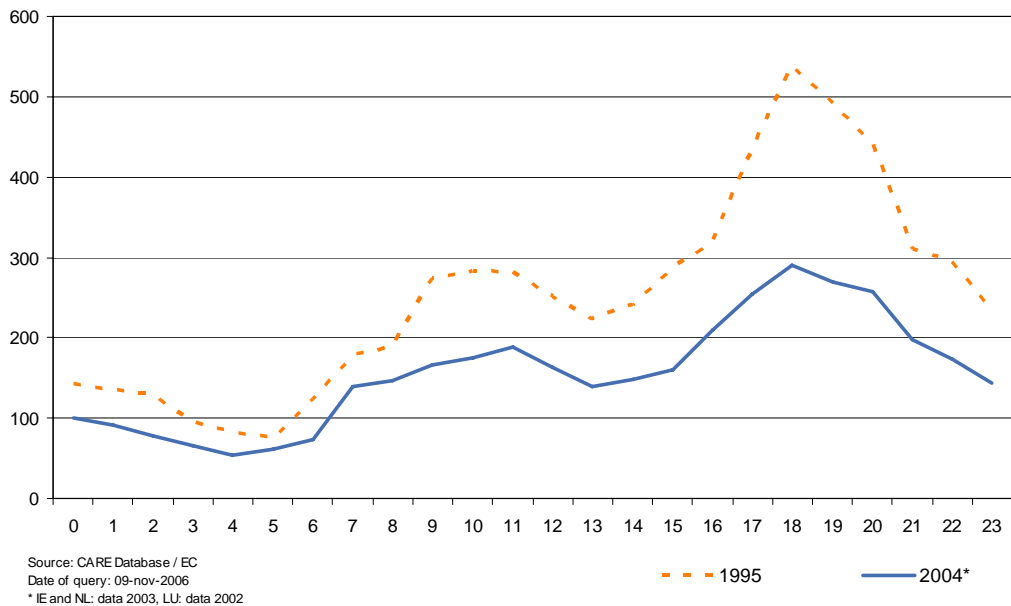
Source: CARE Database / EC

Date of query: 05-dec-2006

\* Data 2003

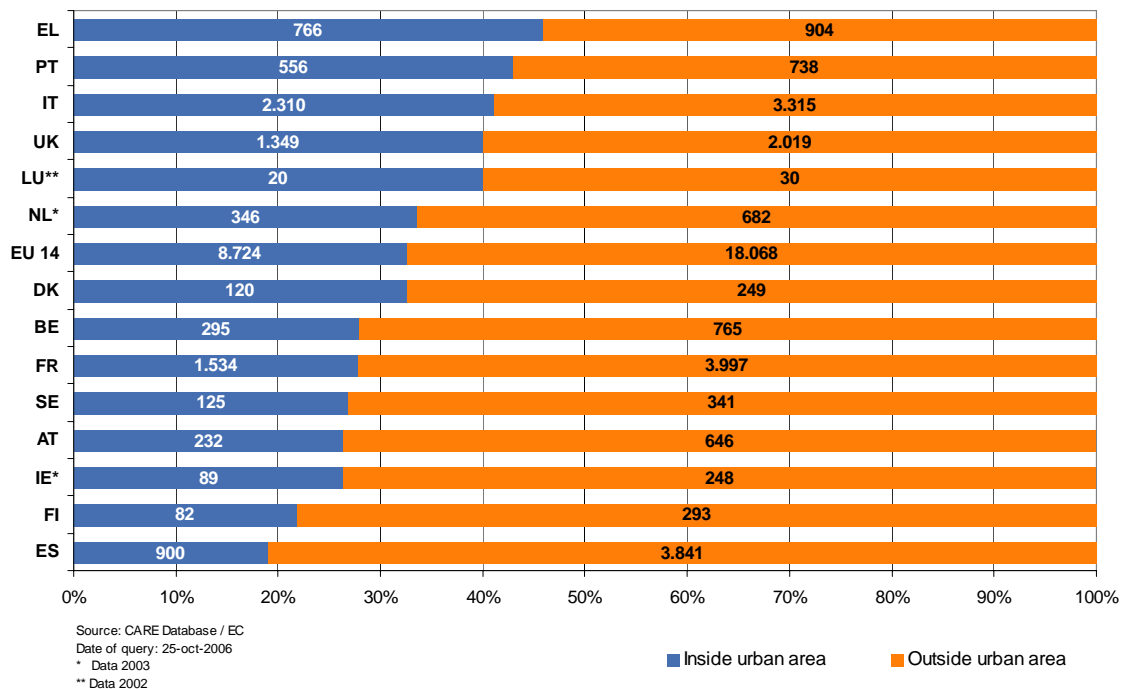
\*\* Data 2002

Figure 25: Number of pedestrian fatalities by hour of day (EU-14), 1995 and 2004



### 4.3.2 Type of area/road

Figure 26: Number of fatalities by type of area by country, 2004

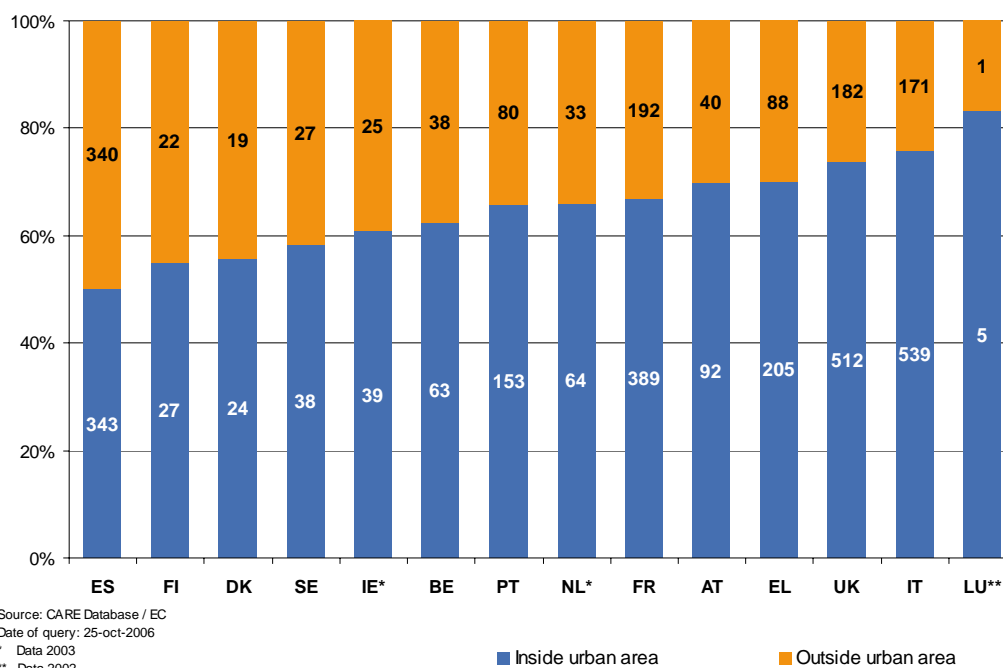


**Table 46: Number of fatalities by type of area and road by country, 2004**

	Inside urban area	Outside urban area			Total
		Motorway	Non-Motorway	Unknown	
BE	295	124	639	2	1.162
DK	120	27	222	0	369
EL	766	116	242	546	1.670
ES	900	278	3.562	0	4.741
FR	1.534	312	3.685	0	5.530
IE*	89	8	240	0	337
IT	2.310	648	2.667	0	5.625
LU**	20	0	30	0	62
NL*	346	151	531	0	1.028
AT	232	118	528	0	878
PT	556	116	621	0	1.294
FI	82	17	6	270	375
SE	125	32	309	0	480
UK	1.349	164	1.720	135	3.368
EU-14	8.724	2.112	15.002	953	26.919
% by road type	32,4%	7,8%	55,7%	3,5%	100,0%

Source: CARE Database / EC  
Date of query: 25-oct-2006  
\* Data 2003  
\*\* Data 2002

**Figure 27: Number of pedestrian fatalities by type of area by country, 2004**





**Table 47: Number of pedestrian fatalities by type of area and road by country, 2004**

	Inside urban areas	Outside urban area			Total
		Motorway	Non-Motorway	Unknown	
BE	63	1	37	0	101
DK	24	4	15	0	43
EL	343	20	320	0	683
ES	27	2	20	0	49
FR	389	22	170	0	581
IE*	205	20	23	45	293
IT	39	0	25	0	64
LU**	539	31	140	0	710
NL*	5	0	1	0	6
AT	64	7	26	0	97
PT	92	10	30	0	132
FI	153	7	73	0	233
SE	38	5	22	0	67
UK	512	20	150	12	694
EU-14	2.493	149	1.052	57	3.753
% by road type	66,4%	4,0%	28,0%	1,5%	100,0%

Source: CARE Database / EC

Date of query: 05-dec 2006

\* Data 2003

\*\* Data 2002

### 4.3.3 Type of junction

**Table 48: Number of fatalities by type of junction by country, 2004**

	Not at junction	At junction					Not defined	Total
		Crossroad	Level crossing	T or Y junction	Other junction	Roundabout		
BE	940	0	1	0	203	7	11	1.162
DK	245	59	5	1	54	3	2	369
EL	1.548	0	0	0	0	0	122	1.670
ES	3.977	319	0	257	110	77	0	4.741
FR	4.708	482	16	147	138	39	0	5.530
IE*	0	16	0	48	5	4	264	337
IT	3.984	774	7	0	789	71	0	5.625
LU**	54	6	0	2	0	0	0	62
NL*	704	161	29	122	0	9	3	1.028
AT	507	92	19	29	1	4	226	878
PT	832	68	9	112	17	7	249	1.294
FI	0	0	0	0	65	0	310	375
SE	4	98	0	0	27	0	351	480
UK	2.178	192	0	686	246	65	1	3.368
EU-14	19.681			5.699			1.539	26.919
% by junction	73,1%			21,2%			5,7%	100,0%

Source: CARE Database / EC

Date of query: 19-oct-2006

\* Data 2003

\*\* Data 2002

**Table 49: Number of pedestrian fatalities by type of junction by country, 2004**

	Not at junction	At junction					Not defined	Total
		Crossroad	Level crossing	T or Y junction	Other junction	Roundabout		
BE	89	0	0	0	10	0	2	101
DK	28	10	0	1	3	1	0	43
EL	565	48	0	48	15	6	0	682
ES	498	48	0	17	15	4	0	582
FR	254	0	0	0	0	0	39	293
IE*	0	2	0	15	1	3	43	64
IT	567	71	0	0	68	4	0	710
LU**	4	2	0	0	0	0	0	6
NL*	71	15	2	8	0	1	0	97
AT	76	19	4	2	0	0	31	132
PT	141	15	0	21	3	2	50	232
FI	37	0	0	0	11	0	1	49
SE	0	19	0	0	4	0	44	67
UK	353	60	0	214	55	12	0	694
EU-14	2.683	859					210	3.752
% by junction	71,5%	22,9%					5,6%	100,0%

Source: CARE Database / EC

Date of query: 05-dec-2006

\* Data 2003

\*\* Data 2002

### 4.3.4 Weather conditions

Figure 28: Number of fatalities by weather conditions (EU-14), 2004\*

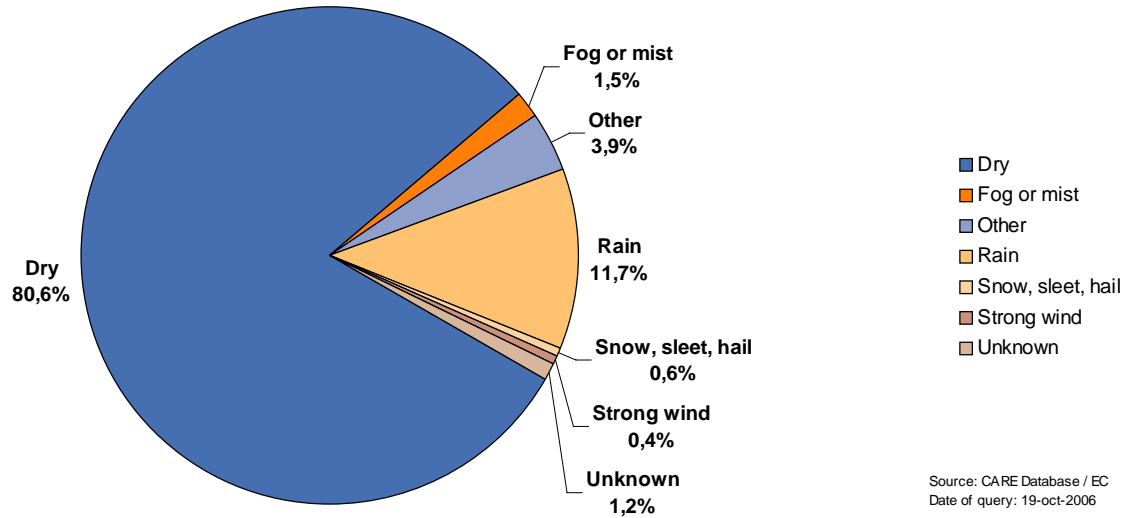


Table 50: Number of fatalities by weather conditions by country, 2004

	Dry	Fog or mist	Other	Rain	Snow, sleet, hail	Strong wind	Total
BE	881	5	8	87	9	11	1.162
DK	298	4	0	59	2	1	369
EL	1.433	15	37	172	6	7	1.670
ES	3.970	79	67	571	21	32	4.741
FR	4.581	116	88	681	26	38	5.530
IE*	262	10	0	47	4	2	337
IT	4.067	56	804	663	23	12	5.625
LU**	21	0	0	18	0	0	62
NL*	909	16	0	75	8	3	1.028
AT	725	11	0	104	35	3	878
PT	1.081	31	0	161	2	5	1.294
FI	320	6	0	22	14	0	375
SE	379	19	0	63	3	0	480
UK	2.783	24	55	424	20	0	3.368
EU-14	21.709	392	1.059	3.147	174	114	26.919
% by weather	80,6%	1,5%	3,9%	11,7%	0,6%	0,4%	100,0%

Source: CARE Database / EC

Date of query: 19-oct-2006

\* Data 2003

\*\* Data 2002

\* IE & NL: 2003, LU: 2002



## 5 Fatal accidents 2004

### 5.1 Various periods of time (month, day of week, hour of day)

**Table 51: Number of fatal accidents<sup>1</sup> by month by country, 2004**

	Jan	Feb	Mar	Apr	May	Jun	Jul	Aug	Sep	Oct	Nov	Dec	Total
BE	96	79	90	86	95	99	103	100	82	90	82	94	1.096
DK	26	27	22	25	33	28	30	29	25	24	39	33	341
EL	104	95	108	119	128	131	151	153	144	118	106	127	1.484
ES	290	249	281	296	309	327	347	356	280	357	263	288	3.643
FR	372	308	325	327	427	403	473	453	444	467	367	400	4.766
IE*	17	21	30	21	32	31	25	24	17	32	30	21	301
IT	365	322	351	390	478	483	522	478	422	407	448	416	5.082
LU**	2	4	1	3	3	7	3	6	4	7	7	5	52
NL*	89	59	86	66	71	98	85	86	78	73	83	66	940
AT	47	39	48	71	58	90	74	104	72	76	75	64	818
PT	87	82	70	77	80	82	104	106	73	98	89	76	1.024
FI	21	19	15	33	37	27	25	23	35	37	26	25	323
SE	22	27	24	31	34	55	39	53	37	41	26	41	430
UK	243	224	219	251	286	257	233	281	263	253	282	314	3.106
EU-14	1.781	1.555	1.670	1.796	2.071	2.118	2.214	2.252	1.976	2.080	1.923	1.970	23.406
% by month	7,6%	6,6%	7,1%	7,7%	8,8%	9,0%	9,5%	9,6%	8,4%	8,9%	8,2%	8,4%	100,0%

Source: CARE Database / EC

Date of query: 17-nov-2006

\* Data 2003

\*\* Data 2002

**Table 52: Number of fatal accidents<sup>1</sup> by day of week by country, 2004**

	Mon	Tue	Wed	Thu	Fri	Sat	Sun	Total
BE	144	131	135	141	154	201	190	1.096
DK	46	43	44	53	43	62	50	341
EL	207	178	176	168	231	248	276	1.484
ES	473	452	418	477	582	616	625	3.643
FR	601	571	595	619	747	863	770	4.766
IE*	42	28	28	39	50	52	62	301
IT	626	624	590	665	716	914	947	5.082
LU**	9	5	7	6	9	11	5	52
NL*	138	114	121	112	161	159	135	940
AT	93	110	113	130	132	130	110	818
PT	140	133	110	112	154	174	201	1.024
FI	58	40	39	45	58	50	33	323
SE	63	43	54	74	64	69	63	430
UK	410	393	367	396	501	558	481	3.106
EU-14	3.050	2.865	2.797	3.037	3.602	4.107	3.948	23.406
% by day	13,0%	12,2%	11,9%	13,0%	15,4%	17,5%	16,9%	100,0%

Source: CARE Database / EC

Date of query: 17-nov-2006

\* Data 2003

\*\* Data 2002

<sup>1</sup> Note that numbers have not been corrected for 30 day definition for EL, ES, FR, IT and PT

**Table 53: Number of fatal accidents<sup>1</sup> by hour of day by country, 2004**

	0	1	2	3	4	5	6	7	8	9	10	11	12
BE	38	47	41	32	42	40	43	48	46	39	40	37	38
DK	15	9	4	10	7	6	12	10	8	11	14	23	16
EL	52	45	52	52	48	67	60	61	50	53	48	55	63
ES	81	103	79	91	105	105	147	187	177	134	129	157	161
FR	143	114	119	94	139	145	144	205	225	190	177	194	220
IE*	16	18	10	13	11	5	5	11	8	6	8	14	19
IT	116	227	160	171	125	146	148	156	207	187	213	229	208
LU**	3	2	2	3	4	0	1	1	3	1	1	0	1
NL*	22	23	19	18	14	23	26	50	41	29	53	41	42
AT	23	23	19	24	27	30	42	38	24	23	27	39	34
PT	36	33	27	28	23	25	41	47	45	36	39	26	39
FI	10	8	9	9	11	10	11	14	9	15	17	11	21
SE	18	14	11	8	10	7	10	16	5	16	16	27	27
UK	108	112	89	79	62	64	84	107	117	96	108	123	147
EU-14	681	778	641	632	628	673	774	951	965	836	890	976	1.036
% by hour	2,9%	3,3%	2,7%	2,7%	2,7%	2,9%	3,3%	4,1%	4,1%	3,6%	3,8%	4,2%	4,4%

	13	14	15	16	17	18	19	20	21	22	23	Total
BE	38	54	57	55	77	59	50	41	40	53	38	1.096
DK	10	22	22	26	22	18	25	9	13	17	12	341
EL	54	65	74	69	84	77	68	72	72	77	66	1.484
ES	173	195	156	176	191	209	209	218	176	147	137	3.643
FR	166	249	259	287	338	326	273	231	198	167	163	4.766
IE*	6	9	7	22	23	9	17	22	10	14	11	301
IT	197	192	272	290	340	337	302	255	197	179	189	5.082
LU**	3	4	4	2	4	3	3	2	2	1	2	52
NL*	39	61	79	60	81	55	35	34	32	36	27	940
AT	38	49	50	58	43	56	37	31	21	27	35	818
PT	46	46	48	52	56	71	72	63	48	41	36	1.024
FI	16	14	22	22	16	18	12	11	14	16	7	323
SE	29	34	24	21	25	25	16	16	17	18	20	430
UK	129	145	176	199	215	179	164	161	151	132	159	3.106
EU-14	944	1.139	1.250	1.339	1.515	1.442	1.283	1.166	991	925	902	23.406
% by hour	4,0%	4,9%	5,3%	5,7%	6,5%	6,2%	5,5%	5,0%	4,2%	4,0%	3,9%	100,0%

Source: CARE Database / EC  
Date of query: 17-nov-2006  
\* Data 2003  
\*\* Data 2002

<sup>1</sup> Note that numbers have not been corrected for 30 day definition for EL, ES, FR, IT and PT



## 5.2 Type of area / road

**Table 54: Number of fatal accidents<sup>1</sup> by type of area and road by country, 2004**

	Inside urban area	Outside urban area			Total
		Motorway	Non-motorway	Unknown	
BE	281	117	601	2	1.096
DK	115	24	202	0	341
EL	717	97	195	475	1.484
ES	651	206	2.786	0	3.643
FR	1.386	247	3.133	0	4.766
IE*	83	7	211	0	301
IT	2.212	534	2.336	0	5.082
LU**	17	0	27	0	52
NL*	335	129	476	0	940
AT	220	106	492	0	818
PT	459	90	475	0	1.024
FI	79	15	6	223	323
SE	122	24	271	0	430
UK	1.276	149	1.559	122	3.106
<b>EU-14</b>	<b>7.953</b>	<b>1.745</b>	<b>12.770</b>	<b>822</b>	<b>23.406</b>
<b>% by road type</b>	<b>34,0%</b>	<b>7,5%</b>	<b>54,6%</b>	<b>3,5%</b>	<b>100,0%</b>

Source: CARE Database / EC  
Date of query: 17-nov-2006  
\* Data 2003  
\*\* Data 2002

<sup>1</sup> Note that numbers have not been corrected for 30 day definition for EL, ES, FR, IT and PT

## 5.3 Type of junction

**Table 55: Number of fatal accidents<sup>1</sup> by type of junction by country, 2004**

	Not at junction	At junction					Not defined	Total
		crossroad	level crossing	other junction	roundabout	t or y junction		
BE	881	0	1	196	7	0	11	1.096
DK	224	55	4	52	3	1	2	341
EL	1.366	0	0	0	0	0	118	1.484
ES	3.091	213	0	88	60	191	0	3.643
FR	4.036	422	14	122	35	137	0	4.766
IE*	0	15	0	5	4	39	238	301
IT	3.591	706	5	715	65	0	0	5.082
LU**	45	5	0	0	0	2	0	52
NL*	635	150	25	0	8	119	3	940
AT	477	89	16	1	4	29	202	818
PT	653	56	6	15	5	94	195	1.024
FI	0	0	0	60	0	0	263	323
SE	4	90	0	25	0	0	311	430
UK	1.981	182	0	231	63	648	1	3.106

Source: CARE Database / EC

Date of query: 17-nov-2006

\* Data 2003

\*\* Data 2002

<sup>1</sup> Note that numbers have not been corrected for 30 day definition for EL, ES, FR, IT and PT

## 5.4 Weather conditions

**Table 56: Number of fatal accidents<sup>1</sup> by weather conditions by country, 2004**

	Dry	Fog or mist	Other	Rain	Snow, sleet, hail	Strong wind	Total
BE	833	5	6	86	7	9	1.096
DK	274	4	0	55	2	1	341
EL	1.278	11	33	151	5	6	1.484
ES	3.049	60	52	437	17	28	3.643
FR	3.973	100	64	573	24	32	4.766
IE*	234	9	0	43	4	2	301
IT	3.683	49	730	590	22	8	5.082
LU**	21	0	0	14	0	0	52
NL*	835	15	0	67	7	3	940
AT	674	10	0	97	34	3	818
PT	861	26	0	124	1	1	1.024
FI	268	6	0	22	14	0	323
SE	343	15	0	54	3	0	430
UK	2.570	21	48	396	19	0	3.106
<b>EU-14</b>	<b>18.896</b>	<b>331</b>	<b>933</b>	<b>2.709</b>	<b>159</b>	<b>93</b>	<b>23.406</b>
<b>% by wheather</b>	<b>80,7%</b>	<b>1,4%</b>	<b>4,0%</b>	<b>11,6%</b>	<b>0,7%</b>	<b>0,4%</b>	<b>100,0%</b>

Source: CARE Database / EC  
Date of query: 17-nov-2006  
\* Data 2003  
\*\* Data 2002

<sup>1</sup> Note that numbers have not been corrected for 30 day definition for EL, ES, FR, IT and PT



## 6 Glossary

The CARE glossary provides short definitions for variables used in the Annual Statistical Report, and includes short definitions of CARE common values.

The glossary has two components:

- a) A **definition** of the common value
- b) The **availability** of the common value in the data file for each Member State.

### ACCIDENT

#### **ACCIDENT**

Definition: Occurs on a public road. Occurs on a private road to which the public has right of access (except BE, NL, PT). Involves at least one moving vehicle (except UK, PT). Involves at least one injured or killed person. Is reported by the police. Self reporting possible (BE, UK, EL, IT, IE). Self reporting not possible (DK, FI, NL, AT, PT). Confirmed suicides excluded (BE, UK, IE, NL, AT, DK, PT). Confirmed suicides included (ES, IT, LU).

Note: The variation in the groups of road and the coverage of the injury categories included in injury accidents, together with differences in the level of self reported accidents, will lead to significant variations in the number of injury accidents reported, and their reporting rate, between Member States.

#### **FATAL ACCIDENT**

Definition: Accident with at least one killed person regardless the injury severity of any other involved persons.

Note: See "killed" definition from Injury Severity defined in Person type item (Death within 30 days of a road accident [UN/ECE Geneva 1995 – Statistics of Road Traffic Accidents in Europe and North America], except AT [3 days before 1992], ES [24 hours in CARE; 24 hours before 1993 in publication], FR [6 days], GR [24 hours], IT [7 days], PT [24 hours]. Suicide not included [except DK, ES, FR]. Natural death not included [except LU, SE]).

Data availability: All countries

### TIME TYPE ITEMS

#### **MONTH**

Definition: Calendar month

Data availability: All countries (except DK)

#### **HOUR**

Definition: Period of 60 minutes. Rounded down to whole hours (except EL, ES, IT: rounded to nearest hour).

Note: Winter time is:

- GMT from November to March (DE from 1996 onwards, GB, IE, NI, PT)
- GMT +1 hour from October to March (BE, AT, DK prior to 1996, DK, ES, FR, IT, LU, NL, SE)
- GMT +2 hours from October to March (EL, FI).

Summer time is one hour ahead of winter time:

- GMT +1 hour from April to October (DK from 1996 onwards, GB, IE, NI, PT)
- GMT +2 hours from April to September (AT, BE, DK prior to 1996, DK, ES, FR, IT, LU, NL, SE)
- GMT +3 hours from April to September (EL, FI)

For PT, unknown hour coded as '12' during daytime and '0' during night time

Data availability: All countries (except DK)

### **DAY OF WEEK**

Definition: 24 hour day within 7 day week.

Note: Data calculated by the CARE system from the date of accident, where data is not available in national files (AT from 1992 onwards, BE, FR prior to 1993, PT, SE).

Data availability: All countries.

## **PERSON CLASS**

### **DRIVER**

Definition: Person driving or riding any motorised vehicle or pedal cycle. Person herding animals is not a driver (except BE, AT). Learner driver is a driver (except ES, PT). Learner driver is a driver during a driving test, but not in a driving lesson (DK). Driving instructor is not a driver (except ES, PT). Driving instructor is a driver during a driving lesson, but not during a driving test (DK).

Note: Uninjured drivers are included in the database (except GB, NI, NL: implicitly included in vehicle records only). Data on driving instructors and learner drivers collected separately from 1993 onwards (SE).

Data availability: All countries.

### **PASSENGER**

Definition: Person on or in a vehicle, who is not the driver. Includes person in the act of boarding or alighting from a vehicle (except DK). Learner driver is not a passenger (except ES, PT). Learner driver is a passenger during a driving lesson, but not during a driving test (DK). Driving instructor is a passenger (except ES, PT). Driving instructor is a passenger during a driving test, but not in a driving lesson (DK).

Note: Uninjured passengers not included in the database (except FR, IE, LU; ES, FI in some cases, AT).

Data availability: All countries.

### **PEDESTRIAN**

Definition: Person on foot. Person pushing or holding bicycle (except DK). Person pushing a pram or pushchair. Person leading or herding an animal (except DK, AT). Person riding a toy cycle on the footway (except AT). Person on roller skates, skateboard or skis (except AT). Does not include person in the act of boarding or alighting from a vehicle (except DK, ES).

Note: Uninjured pedestrians not included in the database (except BE, IE, LU, NL implicitly included in element records; DK, FR, FI, AT, SE if they caused the accident; ES not consistently).

Data availability: All countries.

## **TYPE OF INJURY**

### **INJURED**

Definition: Injured with application of correcting coefficient as stated for the 'Killed at 30 days'. Injured in a road accident. Hospitalisation or medical treatment not necessarily required (except FR). Self declaration of injury (DK if slight; FI, GB, IT, IE, NI). Opinion of the police. Aggregation of the following. injury severities: SERIOUSLY INJURED AS REPORTED + SLIGHTLY INJURED + INJURED - 1 COEFFICIENT

Data availability: All countries

## FATALITIES

**Definition:** Death within 30 days of a road accident (UN/ECE Geneva 1995 – Statistics of Road Traffic Accidents in Europe and North America, annex 1). Suicide not included (except DK, ES, FR). Natural death not included (except LU, SE). Corrective factors have been applied to comply with this international definition for the following countries: EL (24 hours), ES (24 hours in CARE; 24 hours before 1993 in publication), FR (6 days), IT (7 days), AT (3 days before 1992), PT (24 hours).

**Data availability:** All countries.

Member State	Correcting factors		
Greece	K(30) = K * 1.18 up to 1995		
Spain	K(30) = K * 1.3 up to 1992		
	1993 up to 1996:		
		Outside urban area	Inside urban area
	Driver	K(30)=K+SI*2.46%	K(30)=K+SI*1.02%
	Passenger	K(30)=K+SI*2.29%	K(30)=K+SI*0.94%
	Pedestrian	K(30)=K+SI*7.22%	K(30)=K+SI*3.87%
	1997 up to 2000:		
		Outside urban area	Inside urban area
	Driver	K(30)=K+SI*2.44%	K(30)=K+SI*1.93%
	Passenger	K(30)=K+SI*2.17%	K(30)=K+SI*1.80%
	Pedestrian	K(30)=K+SI*4.76%	K(30)=K+SI*5.71%
	2001 up to 2004:		
	Outside urban area	Inside urban area	
Driver	K(30)=K+SI*2.41%	K(30)=K+SI*2.17%	
Passenger	K(30)=K+SI*2.24%	K(30)=K+SI*2.15%	
Pedestrian	K(30)=K+SI*6.17%	K(30)=K+SI*4.34%	
France	K(30) = K * 1.09 up to 1993 K(30) = K * 1.057 from 1994 onwards		
Italy	K(30) = K * 1.078		
Austria	K(30) = K * 1.12 only for 1991		
Portugal	K(30) = K * 1.3 up to 1997 K(30) = K * 1.14 from 1998 onwards		
K: number of persons killed, SI: number of persons seriously injured			

## GENDER

### FEMALE

**Definition:** Determined by the police (except ES, IT, LU, AT, PT: on the basis of identity documents; DK, FI, SE: on the basis of personal ID number).

**Data availability:** All countries.

**MALE**

Definition: Determined by the police (except ES, IT, LU, AT, PT: on the basis of identity documents; DK, FI, SE: on the basis of personal ID number).

Data availability: All countries.

**AGE****AGE**

Definition: Length of life of person. Rounded down to whole number of years (except EL, IT, NI: rounded to nearest year).

Note: Age 0 to 1 is exceptionally rounded up (FR, IT, IE, LU, NI, PT). Age over 99 only available for ES, FR (1993 on), NL.

Data availability: All countries.

**AREA TYPE****INSIDE URBAN AREA**

Definition: Area inside urban area boundary signs (except IE, UK). Includes dual carriageways and national roads. Can include motorways (except DK, EL, IT). Opinion of the police (DK, SE).

Note: Data approximated from speed limit of 40 mph or less (IE, UK).

Data availability: All countries.

**OUTSIDE URBAN AREA**

Definition: Area outside urban area boundary signs. Opinion of the police (DK, SE). Includes motorways.

Note: Data approximated from speed limit of over 40 mph (IE, UK).

Data availability: All countries.

**MOTORWAY**

Definition: Public road with dual carriageways, and at least two lanes each way. Entrance and exit signposted. Road with grade separated interchanges. Road with a central barrier or central reservation. No crossing permitted. No stopping permitted unless in an emergency. Entry prohibited for pedestrians, animals, pedal cycles, mopeds, agricultural vehicles; learner drivers (BE, GB, EL, IE, NI, PT). Access restricted to motor vehicles (DK, FI, AT). Minimum speed between 50 km/h and 80 km/h (except FR, UK). Maximum speed between 100 km/h and 130 km/h (except DK recommended 130 km/h).

Data availability: All countries.

**MODES OF TRANSPORT – VEHICLE GROUP****AGRICULTURAL TRACTOR**

Definition: Motor vehicle for agricultural use, with wheels or caterpillar tracks, with at least two axles. Driving licence required (DK, EL, ES, FI, GB, IT, IE, LU, AT; not in FR). Maximum speed 30 km/h or 40 km/h.

Data availability: All countries (except DK prior to 1997, AT, FR, GB, IE from 1996 onwards, LU).

Value included in another value:

agricultural machine (FR), construction or agricultural machine (DK, AT prior to 1997), agricultural or industrial tractor (LU), other motor vehicle (GB), other (IE from 1996 onwards).

**BUS OR COACH**

Definition: Motor vehicle with at least four wheels, used for transporting people. Public or private use. Type D driving licence required (BE, GB, IE, NI). Includes bus, more than 8 and 16 seats, minibus, trolley-bus (except LU), scheduled bus, unscheduled bus, school bus.

Data availability: All countries.

**CAR OR TAXI**

Definition: Includes car, taxi. Motor vehicle with four wheels. Used to transport only or mainly people. Seating for no more than 8 passengers. Type B driving licence required. Includes taxi-bus (NL).

Data availability: All countries.

**HEAVY GOODS VEHICLE**

Definition: Includes road tractor, road tractor with semi trailer, lorry over 3,5 tonnes. Motor vehicle with at least four wheels, with a permissible gross vehicle weight of over 3.5 tonnes, used only for the transport of goods. With or without a trailer. Type C driving licence required. Includes lorry, over 3.5 tonnes ; road tractor ; road tractor with semi-trailer ; lorry with trailer ; tanker (except FI).

Note: Lorries cannot systematically be categorised as over 3.5 tonnes (DK, IT).

Data availability: All countries (except DE, IT).

**LORRY, LESS THAN 3,5 TONNES**

Definition: Motor vehicle with a permissible gross vehicle weight of less than 3.5 tonnes, used only for the transport of goods. Type B driving licence required.

Note: Lorries cannot systematically be categorised as less than 3.5 tonnes (DK, IT).

Data availability: All countries (except DK, IT, LU).

**MOPED**

Definition: Motor vehicle with two wheels, with an engine size of less than 50 cc. Design speed between 25 km/h and 50 km/h. One or two seats. Minimum age for driver between 14 and 18 (except IT). No driving licence required (ES, FR, FI, GB, IT, PT, SE). Unregistered vehicle (BE, DK, ES, FR, SE).

Data availability: All countries (except IE from 1996 onwards).

Value included in another value:

Two wheeled motor vehicle (IE from 1996 onwards).

**MOTORCYCLE**

Definition: Motor vehicle with two or three wheels (not three wheeled in DK), with an engine size of more than 50 cc. With a trailer possible (except DK). With a sidecar possible. Registered vehicle (except PT). Type A driving licence required. Includes motor scooter (except FR).

Data availability: All countries (except IE from 1996 onwards).

Value included in another value: two wheeled motor vehicle (IE from 1996 onwards).

### **OTHER VEHICLE**

Definition: Includes other non-motor vehicle, other motor vehicle.

### **PEDAL CYCLE**

Definition: Vehicle with at least two wheels, without engine, moved by pedals or hand cranks. With or without a trailer. With or without passengers. Ridden in the carriageway. Ridden on the pavement (except DK, LU).

Data availability: All countries.

### **PEDESTRIAN**

Definition: Wherever a person's person class has been identified as being pedestrian, its vehicle type is "pedestrian". This as opposed to older version of CARE where a pedestrian didn't have a vehicle type.

Data availability: All countries.

## **JUNCTION TYPE**

### **JUNCTION**

Definition: Road intersection with three or more arms. Not grade separated. Includes T junction, Y junction, crossroad, level crossing (except DK, FI, GB, NI), roundabout (except FR), multiple junction.

Data availability: All countries (except EL).

### **CROSSROAD**

Definition: Road intersection with four arms. Opinion of the police (DK, ES, FI; not AT).

Data availability: All countries (except BE, EL).

### **NOT AT A JUNCTION**

Definition: Position on road more than 20m from a junction or roundabout (GB, IE, NI, NL, AT). Position on road more than 50m from a junction (FR). Opinion of the police (BE, DK, ES, FI, IT, LU, SE).

Data availability: All countries (except EL).

### **ROUNDAABOUT**

Definition: Circular highway. Includes sections of the road leading into it, within 20m (GB, IE, NI, AT). Opinion of the police (DK, ES, FR, IT).

Data availability: All countries (except BE, DK, EL, FI, LU, PT).

### **T OR Y JUNCTION**

Definition: Road intersection with three arms. Includes T junction, Y junction, staggered junction.

Data availability: All countries (except BE, EL, FI, IT, PT).

## 7 List of tables

Table 1:	Annual number of injury accidents by country, 1995-2004 .....	10
Table 2:	Annual number of fatalities by country, 1995-2004 .....	12
Table 3:	Annual number of fatal accidents by country, 1995-2004* .....	13
Table 4:	Annual number of pedestrian fatalities by country, 1995-2004 .....	14
Table 5:	Annual number of pedal cyclist fatalities by country (includes all riders and passengers of pedal cycles), 1995-2004.....	15
Table 6:	Annual number of moped rider & passenger fatalities by country, 1995-2004 .....	15
Table 7:	Annual number of motorcycle rider & passenger fatalities by country, 1995-2004 .....	16
Table 8:	Annual number of fatalities in accidents involving cars or taxis by country (Attention: fatalities in cars or taxis plus all opponents fatalities), 1995-2004 .....	17
Table 9:	Annual number of fatalities in accidents involving heavy goods vehicles >3,5t by country (Attention: fatalities in heavy goods vehicles plus all opponents fatalities), 1995-2004.....	17
Table 10:	Annual number of fatalities in accidents involving lorries <3,5t by country (Attention: fatalities in lorries <3,5t plus all opponents fatalities), 1995-2004.....	18
Table 11:	Annual number of fatalities by country in accidents involving buses or coaches (Attention: fatalities in buses plus all opponents fatalities), 1995-2004 .....	18
Table 12:	Annual number of fatalities by age group by country, 1995-2000 .....	21
Table 13:	Annual number of fatalities by age group by country, 2001-2004 .....	22
Table 14:	Annual number of female fatalities by country, 1995-2004 .....	23
Table 15:	Annual number of male fatalities by country, 1995-2004 .....	24
Table 16:	Annual number of female fatalities by country, drivers (1995-2004) .....	25
Table 17:	Annual number of male fatalities by country, drivers (1995-2004) .....	25
Table 18:	Annual number of female fatalities by country, passengers (1995-2004) .....	26
Table 19:	Annual number of male fatalities by country, passengers (1995-2004) .....	26
Table 20:	Annual number of female fatalities by country, pedestrians (1995-2004) .....	27
Table 21:	Annual number of male fatalities by country, pedestrians (1995-2004) .....	27
Table 22:	Number of total fatalities by age group by country, 2004 .....	28
Table 23:	Number of female fatalities by age group by country, 2004 .....	28
Table 24:	Number of male fatalities by age group by country, 2004 .....	29
Table 25:	Number of fatalities aged 0 to 15 by mode of transport (in which the fatality was travelling) by country, 2004 .....	29
Table 26:	Number of fatalities aged 16 to 24 by mode of transport (in which the fatality was travelling) by country, 2004 .....	30
Table 27:	Number of fatalities aged 25 to 64 by mode of transport by country, 2004.....	30
Table 28:	Number of fatalities aged 65+ by mode of transport (in which the fatality was travelling) by country, 2004 .....	31
Table 29:	Number of pedestrian fatalities by age group by country, 2004 .....	32
Table 30:	Number of pedal cyclist fatalities by age group by country, 2004 .....	33
Table 31:	Number of moped and motorcycle rider fatalities by age group by country, 2004 .....	33
Table 32:	Number of moped and motorcycle passenger fatalities by age group by country, 2004 .....	34
Table 33:	Number of car or taxi driver fatalities by age group by country, 2004 .....	34
Table 34:	Number of car or taxi passenger fatalities by age group by country, 2004 .....	35
Table 35:	Number of fatalities in heavy goods vehicles and lorries <3,5t by age group by country, 2004 .....	35
Table 36:	Number of fatalities in buses or coaches by age group by country, 2004.....	36
Table 37:	Number of fatalities by person class and age group by country, 2004.....	36
Table 38:	Number of fatalities by mode of transport (in which the fatality was travelling) and type of area by country, 2004 .....	38
Table 39:	Number of fatalities by month by country, 2004 .....	39
Table 40:	Total number of fatalities by day of week by country, 2004 .....	40
Table 41:	Number of fatalities by day of week by country, 2004 (drivers).....	41
Table 42:	Number of fatalities by day of week by country 2004 (passengers).....	41
Table 43:	Number of fatalities by day of week by country, 2004 (pedestrians).....	42
Table 44:	Number of fatalities by hour of day by country, 2004 .....	43
Table 45:	Number of pedestrian fatalities by hour of day by country, 2004 .....	45
Table 46:	Number of fatalities by type of area and road by country, 2004.....	47
Table 47:	Number of pedestrian fatalities by type of area and road by country, 2004 .....	48
Table 48:	Number of fatalities by type of junction by country, 2004.....	48

Table 49:	Number of pedestrian fatalities by type of junction by country, 2004 .....	49
Table 50:	Number of fatalities by weather conditions by country, 2004 .....	50
Table 51:	Number of fatal accidents by month by country, 2004 .....	51
Table 52:	Number of fatal accidents <sup>1</sup> by day of week by country, 2004 .....	51
Table 53:	Number of fatal accidents by hour of day by country, 2004 .....	52
Table 54:	Number of fatal accidents by type of area and road by country, 2004 .....	53
Table 55:	Number of fatal accidents by type of junction by country, 2004 .....	54
Table 56:	Number of fatal accidents by weather conditions by country, 2004 .....	55

## 8 List of figures

Figure 1:	Annual number of fatalities, injury accidents and injured people (EU-25), 1995-2004 .....	6
Figure 2:	Fatalities per million inhabitants, 2004 compared to 1995 (EU-25).....	6
Figure 3:	Share of fatalities by area type, 2004 .....	7
Figure 4:	Distribution of male and female fatalities by person class, 2004* .....	7
Figure 5:	Distribution of fatalities by mode of transport, 2004 .....	8
Figure 6:	Fatalities of children per million inhabitants (aged 0-14 years), 2004 .....	8
Figure 7:	Fatalities of seniors per million inhabitants (aged 65+), 2004 .....	9
Figure 8:	Percentage change in number of fatalities and injury accidents by country (2004 compared to 1995) .....	10
Figure 9:	Annual number of injury accidents by country (BE – IT), 1995-2004 .....	11
Figure 10:	Annual number of injury accidents by country (LU-UK), 1995-2004* .....	11
Figure 11:	Annual number of fatalities by country (BE-IT), 1995-2004* .....	12
Figure 12:	Annual number of fatalities by country (LU-UK), 1995-2004.....	13
Figure 13:	Percentage change in number of fatalities by mode of transport in EU-14 (2004 compared to 1995) .....	14
Figure 14:	Annual number of fatalities by mode of transport (in which the fatality was travelling, includes driver & passenger), EU-14, 1995-2004.....	16
Figure 15:	Annual number of fatalities involving different modes of transport, EU-14 (Attention: fatalities in specific mode of transport plus all opponents fatalities), 1995-2004 ...	19
Figure 16:	Percentage change in number of fatalities by person age group (EU-14), 2004 compared to 1995.....	20
Figure 17:	Increase / decrease of number of fatalities by gender (EU-14), 2004* compared to 1995 .....	20
Figure 18:	Annual number of fatalities by year and age, EU-14 (1995 and 2004) .....	23
Figure 19:	Annual distribution of fatalities by gender, EU-14 (1995 and 2004) .....	24
Figure 20:	Fatalities by age group and mode of transport (EU-14), 2004 .....	32
Figure 21:	Fatalities by type of area and mode of transport (EU-14), 2004 .....	37
Figure 22:	Number of fatalities by month (EU-14), 2004 .....	39
Figure 23:	Total number of fatalities by day of week and person class (EU-14), 2004 .....	40
Figure 24:	Number of fatalities by hour of day (EU-14), 1995 and 2004 .....	44
Figure 25:	Number of pedestrian fatalities by hour of day (EU-14), 1995 and 2004 .....	46
Figure 26:	Number of fatalities by type of area by country, 2004 .....	46
Figure 27:	Number of pedestrian fatalities by type of area by country, 2004 .....	47
Figure 28:	Number of fatalities by weather conditions (EU-14), 2004 .....	50